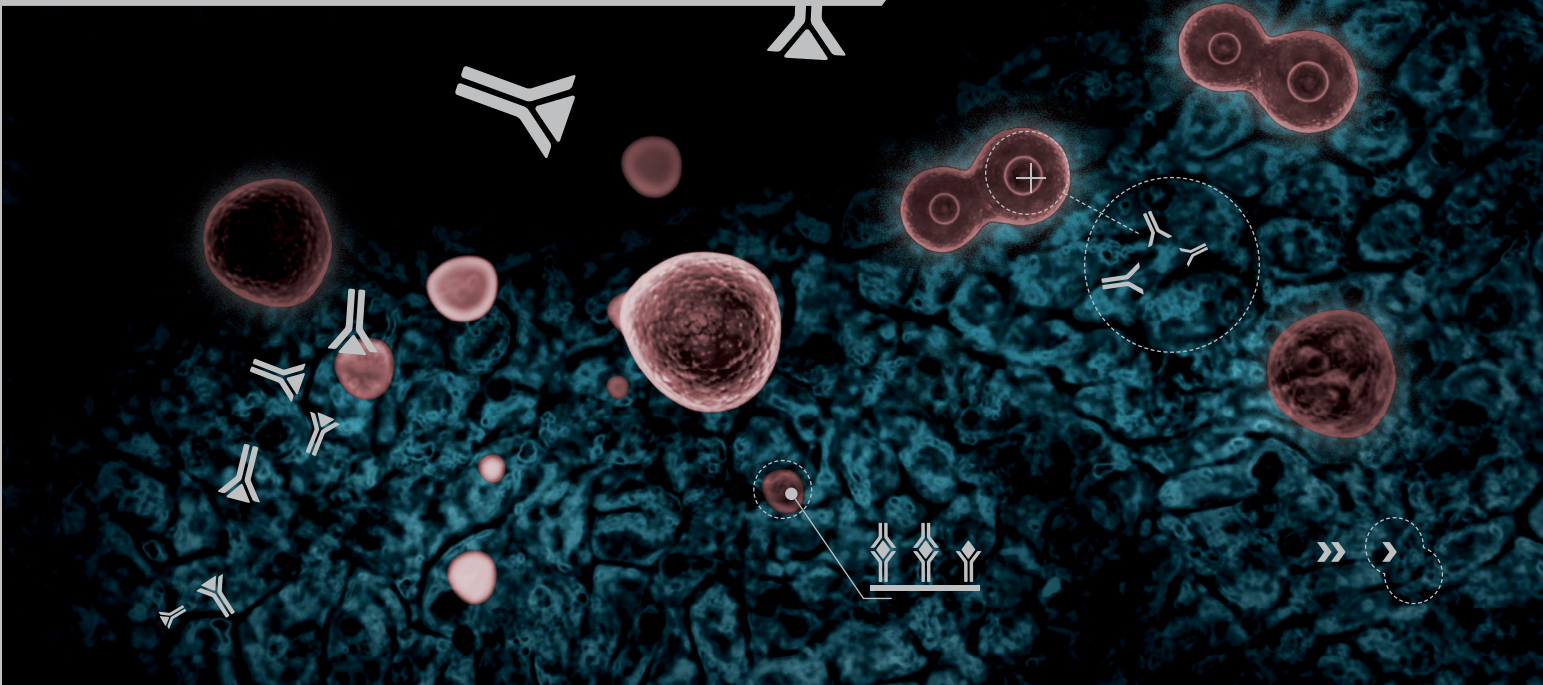


# BIOVENDOR

RESEARCH AND DIAGNOSTIC PRODUCTS

PRODUCT INDEX



# BRILLIANT SOLUTION FOR microRNA BIOMARKERS

Helping in all steps of your miRNA project.  
In both clinical and research laboratory.



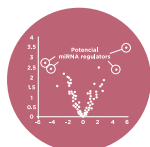
## SAMPLE COLLECTION

- › Collection tubes
- Liquid biopsy samples · Tissue samples · Cell culture samples



## ISOLATION

- › RNA isolation kits
- Cell cultures, tissues, whole blood, PBMC · Serum, plasma · Exosomes



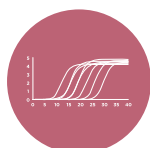
## TARGET SCREENING

- › MiRXES miRNA panels
- Knowledge panels up-to 400 miRNAs · Custom panels for all miRNA targets



## IMMUNOASSAY VALIDATION

- › miREIA kits
- Absolute quantification · High reproducibility · Fast



## qPCR VALIDATION

- › MiRXES ID3EAL kits
- › Two-tailed RT-qPCR kits
- High sensitivity · Low sample volume · Multiplexing · Customization



## CLINICAL DIAGNOSTICS

- › osteomiR
- › thrombomiR
- All-in-one RT-qPCR panels · Normalization controls included · Evaluation software included



## SERVICES

- › Custom miREIA kits
- › Custom Two-Tailed RT-qPCR kits
- › Analytical services
- Using miREIA immunoassays · Using RT-qPCR kits and panels

# miRNA IMMUNOASSAYS

## miRNA IMMUNOASSAYS

cel-miR-39-3p miREIA  
hsa-miR-1-3p miREIA  
hsa-miR-let-7a-5p miREIA  
hsa-miR-let-7b-5p miREIA  
hsa-miR-15a-5p miREIA  
hsa-miR-16-5p miREIA  
hsa-miR-21-5p miREIA  
hsa-miR-23a-3p miREIA  
hsa-miR-24-3p miREIA  
hsa-miR-26b-5p miREIA  
hsa-miR-29a-3p miREIA  
hsa-miR-92a-3p miREIA  
hsa-miR-93-5p miREIA  
hsa-miR-100-5p miREIA  
hsa-miR-129-5p miREIA  
hsa-miR-126-3p miREIA  
hsa-miR-129-5p miREIA  
hsa-miR-136-5p miREIA  
hsa-miR-137-3p miREIA  
hsa-miR-142-5p miREIA  
hsa-miR-145-5p miREIA  
hsa-miR-146a-5p miREIA

hsa-miR-150-5p miREIA  
hsa-miR-155-5p miREIA  
hsa-miR-191-5p miREIA  
hsa-miR-192-5p miREIA  
hsa-miR-197-3p miREIA  
hsa-miR-203a-3p miREIA  
hsa-miR-210-3p miREIA  
hsa-miR-222-3p miREIA  
hsa-miR-223-3p miREIA  
hsa-miR-324-5p miREIA  
hsa-miR-361-5p miREIA  
hsa-miR-423-3p miREIA  
hsa-miR-423-5p miREIA  
hsa-miR-451a miREIA  
hsa-miR-486-5p miREIA  
hsa-miR-625-5p miREIA  
hsa-miR-5100 miREIA  
hsa-piR-5937 miREIA  
mmu-miR-7052-5p miREIA

# TWO-TAILED qPCR

## TWO-TAILED qPCR

cel-miR-39-3p Two-Tailed RT  
cel-miR-39-3p Two-Tailed PCR  
hsa-miR-16-5p Two-Tailed RT  
hsa-miR-16-5p Two-Tailed PCR  
hsa-miR-21-5p Two-Tailed RT  
hsa-miR-21-5p Two-Tailed PCR  
hsa-miR-23a-3p Two-Tailed RT  
hsa-miR-23a-3p Two-Tailed PCR  
hsa-miR-122-5p Two-Tailed RT  
hsa-miR-122-5p Two-Tailed PCR  
hsa-miR-199-3p Two-Tailed RT  
hsa-miR-199-3p Two-Tailed PCR  
hsa-miR-451a Two-Tailed RT  
hsa-miR-451a Two-Tailed PCR

hsa-miR-1909-3p Two-Tailed RT  
hsa-miR-1909-3p Two-Tailed PCR  
hsa-miR-3185 Two-Tailed RT  
hsa-miR-3185 Two-Tailed PCR  
hsa-miR-5001-5p Two-Tailed RT  
hsa-miR-5001-5p Two-Tailed PCR  
hsa-miR-5739 Two-Tailed RT  
hsa-miR-5739 Two-Tailed PCR  
hsa-miR-6795-5p Two-Tailed RT  
hsa-miR-6795-5p Two-Tailed PCR

# miRNA ISOLATION KITS

## miRNA ISOLATION KITS

RNA ISOLATION KIT  
RNA ISOLATION KIT Plasma/Serum

## IMMUNOASSAYS

		1,25(OH) <sub>2</sub> VITAMIN D ELISA			
		EXTRACTION CARTRIDGES FOR 1,25(OH) <sub>2</sub> VITAMIN D TOTAL ELISA			
		EXTRACTION KIT FOR 1,25(OH) <sub>2</sub> VITAMIN D TOTAL ELISA			
		17 $\alpha$ -HYDROXYPROGESTERONE ELISA			
		17 $\alpha$ -HYDROXYPROGESTERONE FREE IN SALIVA ELISA			
HUMAN		2 SCREEN ISLET CELL AUTOANTIBODY ELISA			
		21-HYDROXYLASE (21-OH) AUTOANTIBOD ELISA			
		<b>25-OH-VITAMIN D FREE ELISA (IVD CE)</b>			
		25-OH-VITAMIN D TOTAL ELISA			
HUMAN		<b>25-OH-VITAMIN D ELISA (IVD CE)</b>			
RAT		25-OH-VITAMIN D ELISA			
HUMAN		3 SCREEN ISLET CELL AUTOANTIBODY ELISA			
		5 $\alpha$ -ANDROSTANE-3 $\alpha$ ,17 $\beta$ -DIOL GLUCURONIDE ELISA			
HUMAN		8-OHdG CHECK ELISA (MULTISPECIES SPECIFICITY)			
HUMAN		8-OHdG CHECK (ULTRASENSITIVE) ELISA (MULTISPECIES SPECIFICITY)			
HUMAN		s90K/Mac-2BP ELISA			
<b>A</b>					
HUMAN		ACETYLCHOLINE RECEPTOR AUTOANTIBODY ELISA			
MULTISPECIES		ACSDKP ELISA			
HUMAN		<b>ADIPOCYTE FABP ELISA (IVD CE)</b>			
MOUSE		ADIPOCYTE FABP ELISA			
HUMAN		<b>ADIPONECTIN ELISA (IVD CE)</b>			
HUMAN		<b>ADIPONECTIN ELISA, HIGH SENSITIVITY (IVD CE)</b>			
HUMAN		ADIPONECTIN HMW ELISA			
MOUSE		ADIPONECTIN ELISA			
MOUSE/RAT		ADIPONECTIN HMW ELISA			
		<b>ADMA ELISA (IVD CE)</b>			
		ADMA ELISA, HIGH SENSITIVITY			
		<b>ADMA FAST ELISA (IVD CE)</b>			
HUMAN		AFAMIN ELISA			
HUMAN		AGGRECAN (PG) ELISA			
BOVINE		ALBUMIN ELISA			
MOUSE		ALBUMIN ELISA			
RAT		ALBUMIN ELISA			
RAT		ALBUMIN, HIGH SENSITIVITY ELISA			
MOUSE		ALBUMIN URINARY (S-TYPE) ASSAY			
RAT		ALBUMIN URINARY (S-TYPE) ASSAY			
		ALDOSTERONE ELISA			
RAT		ALPHA-1-ACID GLYCOPROTEIN ELISA			
HUMAN		<b>ALPHA-1-ANTITRYPSIN IN STOOL ELISA (IVD CE)</b>			
		ALPHA-AMYLASE SALIVA ELISA			
HUMAN		ALPHA-FETOPROTEIN ELISA			
HUMAN		ALS ELISA			
HUMAN		AMYLOID BETA (AGGREGATED) ELISA			
MOUSE		AMYLOID BETA 40 ELISA			
MOUSE		AMYLOID BETA 42 ELISA			
HUMAN		AMYLOID BETA 42, ULTRASENSITIVE ELISA			
HUMAN		AMYLOID PRECURSOR PROTEIN ELISA			
		ANDROSTENEDIONE ELISA			
		ANDROSTENEDIONE FREE IN SALIVA ELISA			
HUMAN		ANGIOPOIETIN-LIKE PROTEIN 3 ELISA			
MOUSE/RAT		ANGIOPOIETIN-LIKE PROTEIN 3 ELISA			
HUMAN		ANGIOPOIETIN-LIKE PROTEIN 4 ELISA			
HUMAN		ANGIOPOIETIN-LIKE PROTEIN 6 ELISA			
HUMAN/RAT		ANGIOTENSIN II ELISA			
			HUMAN/RAT/BOVINE/HORSE		ANGIOTENSIN A ELISA, HIGH SENSITIVITY
			HUMAN		ANGIOTENSINOGEN ELISA
			HUMAN		ANNEXIN A1 ELISA
			HUMAN		ANNEXIN V ELISA
			HUMAN		ANTI-ALPHA-GALACTOSYL IgA ELISA
			HUMAN		ANTI-ALPHA-GALACTOSYL IgE ELISA
			HUMAN		ANTI-ALPHA-GALACTOSYL IgG ELISA
			HUMAN		ANTI-ALPHA-GALACTOSYL IgM ELISA
			HUMAN		ANTI-ANNEXIN V ELISA
			MOUSE		ANTI-dsDNA ELISA
			HUMAN		ANTI-IFN-ALPHA ELISA
			HUMAN		<b>ANTI-IgA IgG ELISA (IVD CE)</b>
			RAT		ANTI-KLH IgG ELISA
			RAT		ANTI-KLH IgM ELISA
			MOUSE		ANTI-OVA-IgE ELISA
			MOUSE		ANTI-OVA-IgG1 ELISA
			MOUSE		ANTI-ssDNA ELISA
			HUMAN/MOUSE		ANTHRAX EDEMA FACTOR ASSAY KIT
			HUMAN		sAPO-1/FAS ELISA
			HUMAN		APOLIPOPROTEIN B-48 ELISA
			RABBIT		APOLIPOPROTEIN B-48 ELISA
			HUMAN		APOLIPOPROTEIN M ELISA
			HUMAN		APRIL ELISA
			HUMAN		AQUAPORIN-4 AUTOANTIBODY ELISA
			HUMAN		ARGINASE LIVER TYPE ELISA
			RAT		ATRIOPEPTIN ELISA
			HUMAN		AZUROCIDIN/HBP ELISA
<b>B</b>					
			HUMAN		B-ATRIAL NATRIURETIC FACTOR (1-28) (Dimer, Antiparallel) ELISA, HIGH SENSITIVITY
			HUMAN		Bcl-2 ELISA
			HUMAN		beta2-MICROGLOBULIN ELISA
			RAT		beta2-MICROGLOBULIN ELISA
			HUMAN		BETA-CHORIONIC GONADOTROPIN (BETA-HCG), FREE ELISA
			HUMAN		BETATROPHIN ELISA
			RAT		BNP-3 ELISA, HIGH SENSITIVITY
<b>C</b>					
			HUMAN		C-PEPTIDE ELISA, HIGH SENSITIVITY
			HUMAN/RAT/PORCINE		C-TYPE NATRIURETIC PEPTIDE (32-53)
			HUMAN		CALCITONIN (CT) ELISA, HIGH SENSITIVITY
					CALRETININ ELISA
			HUMAN		<b>CARTILAGE OLIGOMERIC MATRIX PROTEIN ELISA (IVD CE)</b>
			MOUSE		CASPASE-1 ELISA
			HUMAN		CASPASE-8/FLICE ELISA
			HUMAN		CASPASE-9 ELISA
			HUMAN		CATHEPSIN L ELISA
			HUMAN		sCD14 ELISA
			HUMAN		sCD21 ELISA
			HUMAN		sCD23 ELISA
			HUMAN		sCD26 ELISA
			HUMAN		sCD28 ELISA
			HUMAN		sCD30 ELISA
			HUMAN		sCD40 ELISA
			HUMAN		sCD40L ELISA
			MOUSE		sCD40L ELISA
			HUMAN		sCD44STD ELISA

# IMMUNOASSAYS

HUMAN	sCD44VAR (V5) ELISA		
HUMAN	sCD44VAR (V6) ELISA		
HUMAN	sCD134 (OX40) ELISA	RAT	
HUMAN	sCD137/4-1BB ELISA		
HUMAN	sCD152/CTLA-4 ELISA	HUMAN	
	CRGP AFFINITY SORBENT		
HUMAN	CGRP EIA KIT		
RAT	CGRP EIA KIT		
HUMAN	CHEMERIN ELISA	<b>F</b>	HUMAN
HUMAN	CHI3L1 (YK-40) ELISA	HUMAN	sFAS LIGAND ELISA
HUMAN	CHORIONIC GONADOTROPIN (HCG) ELISA	RAT	FERRITIN ELISA
HUMAN	CHROMOGRANIN A ELISA	RAT	FERRITIN ELISA
RAT	CINC-1 ELISA	HUMAN	<b>FETUIN-A (AHSG) ELISA (IVD CE)</b>
HUMAN	<b>CLUB CELL PROTEIN (CC16) ELISA (IVD CE)</b>	HUMAN	FETUIN-B ELISA
CANINE	CLUSTERIN ELISA	HUMAN	FIBROBLAST GROWTH FACTOR-19 ELISA
HUMAN	CLUSTERIN ELISA	HUMAN	FIBROBLAST GROWTH FACTOR-21 ELISA
HUMAN	CORTICOSTEROID-BINDING GLOBULIN ELISA	MOUSE/RAT	FIBROBLAST GROWTH FACTOR-21 ELISA
MOUSE/RAT	CORTICOSTERONE ELISA	HUMAN	FIBRONECTIN ELISA
MOUSE/RAT	CORTICOTROPIN RELEASING FACTOR ELISA, SENSITIVE, EXTRACTION-FREE	HUMAN	FSH ELISA
	CORTISOL ELISA	<b>G</b>	HUMAN
HUMAN	CORTISOL (SALIVA) ELISA	HUMAN	GAD AUTOANTIBODY ELISA
HUMAN	C-PEPTIDE ELISA	HUMAN	GALECTIN-3 ELISA
MOUSE	C-PEPTIDE (U-TYPE) ELISA	HUMAN	GASTROKINE-1 ELISA
RAT	C-PEPTIDE (U-TYPE) ELISA	HUMAN	<b>GDF-15/MIC-1 ELISA (IVD CE)</b>
CANINE	C-REACTIVE PROTEIN ELISA, HIGH SENSITIVITY	CANINE	GHRELIN ACYLATED EASY SAMPLING ELISA
HUMAN	<b>C-REACTIVE PROTEIN ELISA (IVD CE)</b>	HUMAN	GHRELIN ACYLATED ELISA
HUMAN	<b>C-REACTIVE PROTEIN ELISA, HIGH SENSITIVITY (IVD CE)</b>	PORCINE	GHRELIN ACYLATED ELISA
MOUSE	C-REACTIVE PROTEIN ELISA, HIGH SENSITIVITY	RAT	GHRELIN ACYLATED ELISA
RAT	C-REACTIVE PROTEIN ELISA, HIGH SENSITIVITY	HUMAN	GHRELIN EASY SAMPLING ELISA
HUMAN	CTRP1 ELISA	MOUSE/RAT	GHRELIN EASY SAMPLING ELISA
HUMAN	CTRP5 ELISA	HUMAN	GHRELIN UNACYLATED ELISA
HUMAN	CTRP9 ELISA	PORCINE	GHRELIN UNACYLATED ELISA
HUMAN	CYCLOPHILIN 40 ELISA	RAT	GHRELIN UNACYLATED ELISA
HUMAN	CYCLOPHILIN A ELISA	HUMAN	GHRELIN UNACYLATED EASY SAMPLING ELISA
HUMAN	CYCLOPHILIN B ELISA	HUMAN	GLIAL FIBRILLARY ACIDIC PROTEIN ELISA
HUMAN	CYCLOPHILIN F (PPIF) ELISA		GLICENTIN ELISA
CANINE	CYSTATIN C ELISA	HUMAN	GLUCAGON ELISA (MULTISPECIES SPECIFICITY)
HUMAN	<b>CYSTATIN C ELISA (IVD CE)</b>	HUMAN	GLUCAGON-LIKE PEPTIDE-1 ELISA (MULTISPECIES SPECIFICITY)
MOUSE	CYSTATIN C ELISA	HUMAN	GLUCAGON-LIKE PEPTIDE-2 ELISA
RAT	CYSTATIN C ELISA	MOUSE	GLUCAGON-LIKE PEPTIDE-2 ELISA
HUMAN	CYSTEINE-RICH SECRETORY PROTEIN 3 ELISA	RAT	GLUCAGON-LIKE PEPTIDE-2 ELISA
	CYSTICERCOIS AG ELISA	HUMAN	GLUTATHIONE PEROXIDASE 1 ELISA
HUMAN	CYTOCHROME c ELISA	HUMAN	GM-CSF ELISA
		MOUSE	GM-CSF ELISA
		RAT	GM-CSF ELISA
<b>D</b>	RAT	HUMAN	GM-CSF RECEPTOR $\alpha$ CHAIN (CD116) ELISA
	HUMAN	HUMAN	GRANULYSIN ELISA
		HUMAN	GRANZYME B ELISA
		HUMAN	GROWTH HORMONE ELISA
		HUMAN	<b>GROWTH HORMONE SENSITIVE ELISA (IVD CE)</b>
		RAT	GROWTH HORMONE ELISA
		RAT	GROWTH HORMONE (GH) ELISA
		HUMAN	GRP-78 ELISA
<b>E</b>	HUMAN	<b>H</b>	HUMAN
	ENDOCAN ELISA	HUMAN	HAPTOGLOBIN ELISA
	ENPP1 ELISA	RAT	<b>HEART FABP (FABP3) ELISA (IVD CE)</b>
	EOTAXIN ELISA	HUMAN	HEMOGLOBIN ELISA
	EPIDERMAL FABP ELISA	MULTISPECIES	sHER-2 ELISA
	EPIDIDYMIS PROTEIN 4 (HE4) ELISA		HISTAMINE ELISA
	ERYTHROPOIETIN ELISA		sHLA-G ELISA

	HOMOARGININE ELISA	HUMAN	INTERLEUKIN-4 ELISA	
	HOST CELL PROTEIN-HCP (E.COLI) ELISA	HUMAN	INTERLEUKIN-4 ELISA, HIGH SENSITIVITY	
<b>I</b>		MOUSE	INTERLEUKIN-4 ELISA	
HUMAN	IA-2 AUTOANTIBODY ELISA	RAT	INTERLEUKIN-4 ELISA	
HUMAN	sICAM-1 ELISA	HUMAN	INTERLEUKIN-4 RECEPTOR (CD124) ELISA	
MONKEY	sICAM-1 ELISA	HUMAN	INTERLEUKIN-5 ELISA	
HUMAN	sICAM-2 ELISA	MOUSE	INTERLEUKIN-5 ELISA	
HUMAN	sICAM-3 ELISA	HUMAN	<b>INTERLEUKIN-6 ELISA (IVD CE)</b>	
HUMAN	IFN-ALPHA ELISA	MONKEY	INTERLEUKIN-6 ELISA	
PORCINE	IFN-GAMMA 1 ELISA	MOUSE	INTERLEUKIN-6 ELISA	
HUMAN	IFN-GAMMA ELISA	PORCINE	INTERLEUKIN-6 ELISA	
HUMAN	IFN-GAMMA ELISA, HIGH SENSITIVITY	RAT	INTERLEUKIN-6 ELISA	
MOUSE	IFN-GAMMA ELISA	HUMAN	INTERLEUKIN-6 BETA (CD130) ELISA	
PIG	IFN-GAMMA ELISA	HUMAN	SINTERLEUKIN-6 RECEPTOR ELISA	
HUMAN	IFN-OMEGA ELISA	HUMAN	INTERLEUKIN-7 ELISA	
HUMAN	<b>IGF-1 ELISA (IVD CE)</b>	HUMAN	INTERLEUKIN-8 ELISA	
HUMAN	<b>IGF-2 ELISA (IVD CE)</b>	MONKEY	INTERLEUKIN-8 ELISA	
HUMAN	<b>IGFBP-1 ELISA (IVD CE)</b>	HUMAN	INTERLEUKIN-9 ELISA	
RAT	IFN-GAMMA ELISA	HUMAN	INTERLEUKIN-10 ELISA	
HUMAN	IGFBP-2 ELISA	HUMAN	INTERLEUKIN-10 ELISA, HIGH SENSITIVITY	
MOUSE/RAT	IGFBP-2 ELISA	PORCINE	INTERLEUKIN-10 ELISA	
HUMAN	IGFBP-3 FUNCTIONAL LIA	RAT	INTERLEUKIN-10 ELISA	
HUMAN	<b>IGFBP-3 TOTAL ELISA (IVD CE)</b>	HUMAN	INTERLEUKIN-12 (p70) ELISA	
MOUSE/RAT	IGFBP-3 ELISA	HUMAN	INTERLEUKIN-12 ELISA, HIGH SENSITIVITY	
HUMAN	IGFBP-7 ELISA	MONKEY	INTERLEUKIN-12 (p70) ELISA	
HUMAN	IL-1RACP / IL-1R3 ELISA	MOUSE	INTERLEUKIN-12 (p70) ELISA	
HUMAN	ILEAL FABP (FABP6) ELISA	MOUSE	INTERLEUKIN-12 TOTAL (p40 + p70) ELISA	
HUMAN	<b>IMMUNOGLOBULIN A (SECRETORY) IN STOOL ELISA (IVD CE)</b>	HUMAN	INTERLEUKIN-12/INTERLEUKIN-23 p40 ELISA	
MOUSE	IMMUNOGLOBULIN E ELISA	HUMAN	INTERLEUKIN-13 ELISA	
RAT	IMMUNOGLOBULIN E ELISA	MOUSE	INTERLEUKIN-13 ELISA	
HUMAN	IMMUNOGLOBULIN FREE LIGHT CHAINS ELISA	HUMAN	INTERLEUKIN-13 RECEPTOR SUBUNIT ALPHA-2 ELISA	
CANINE	INSULIN ELISA	MOUSE	INTERLEUKIN-15 ELISA	
HUMAN	INSULIN ELISA	HUMAN	INTERLEUKIN-15/INTERLEUKIN-15 RECEPTOR ELISA	
MOUSE/RAT	INSULIN ELISA	RAT	INTERLEUKIN-17A ELISA	
RAT	INSULIN ELISA	MOUSE	INTERLEUKIN-17A ELISA	
RAT	INSULIN CONTROL SET	HUMAN	INTERLEUKIN-17AF ELISA	
HUMAN	INSULIN ELISA (MULTISPECIES SPECIFICITY)	HUMAN	INTERLEUKIN-17F ELISA	
MOUSE	INSULIN ELISA, HIGH SENSITIVITY	MOUSE	INTERLEUKIN-17F ELISA	
HUMAN	INSULIN RECEPTOR ELISA	HUMAN	INTERLEUKIN-18 ELISA	
MOUSE	INSULIN (S-TYPE) ELISA	MOUSE	INTERLEUKIN-18 ELISA	
MOUSE	INSULIN ELISA, ULTRA SENSITIVE	PIG	INTERLEUKIN-18 ELISA	
MOUSE	INSULIN ELISA, WIDE RANGE	HUMAN	INTERLEUKIN-21 ELISA	
PORCINE	INSULIN ELISA	HUMAN	INTERLEUKIN-22 ELISA	
RAT	INSULIN ELISA, HIGH SENSITIVITY	HUMAN	INTERLEUKIN-23 ELISA	
RAT	INSULIN ELISA, ULTRA SENSITIVE	MOUSE	INTERLEUKIN-23 ELISA	
RAT	INSULIN ELISA, WIDE RANGE	HUMAN	INTERLEUKIN-27 ELISA	
HUMAN	INTERLEUKIN-1 ALPHA ELISA	HUMAN	INTERLEUKIN-29 ELISA	
MOUSE	INTERLEUKIN-1 ALPHA ELISA	HUMAN	INTERLEUKIN-31 ELISA	
RAT	INTERLEUKIN-1 ALPHA ELISA	HUMAN	INTERLEUKIN-33 ELISA	
HUMAN	INTERLEUKIN-1RA ELISA	HUMAN	INTESTINAL FABP (FABP2) ELISA	
HUMAN	INTERLEUKIN-1 BETA ELISA	HUMAN	IP-10 ELISA	
MONKEY	INTERLEUKIN-1 BETA ELISA	MOUSE	IP-10 ELISA	
MOUSE	INTERLEUKIN-1 BETA ELISA		IRISIN ELISA	
RAT	INTERLEUKIN-1 BETA ELISA			
HUMAN	INTERLEUKIN-2 ELISA	<b>K</b>	HUMAN	KL-6 ELISA
HUMAN	INTERLEUKIN-2 ELISA, HIGH SENSITIVITY			
MONKEY	INTERLEUKIN-2 ELISA	<b>L</b>	HUMAN	LACTOFERRIN ELISA
MOUSE	INTERLEUKIN-2 ELISA	HUMAN	LECITHIN-CHOLESTEROL ACYLTRANSFERASE ELISA	
RAT	INTERLEUKIN-2 ELISA	HUMAN	LECT2 ELISA	
HUMAN	SINTERLEUKIN-2 RECEPTOR ELISA	HUMAN	<b>LEPTIN ELISA (IVD CE)</b>	

# IMMUNOASSAYS

	HUMAN	LEPTIN RECEPTOR ELISA		HUMAN	PLACENTAL PROTEIN 13 ELISA	
	MOUSE/RAT	LEPTIN ELISA		HUMAN	<b>PMN ELASTASE ELISA (IVD CE)</b>	
	HUMAN	LH ELISA		HUMAN	PREF-1 ELISA	
	RAT	LH ELISA (S-TYPE) ELISA, HIGH SENSITIVITY			PREGNENOLONE ELISA	
	HUMAN	LIF ELISA		CANINE	PROCALCITONIN ELISA	
	HUMAN	LIPOCALIN-2/NGAL ELISA		HUMAN	<b>PROCALCITONIN ELISA (IVD CE)</b>	
					PROGESTERONE ELISA	
<b>M</b>	HUMAN	MATRIX METALLOPROTEINASE-3 (MMP-3) ELISA		MOUSE/RAT	PROGESTERONE ELISA	
	HUMAN	MATRIX METALLOPROTEINASE-8 (MMP-8) ELISA		HUMAN	PROGRANULIN ELISA	
	HUMAN	MATRIX METALLOPROTEINASE-9 (MMP-9) ELISA		MOUSE	PROGRANULIN ELISA	
	HUMAN	MICA ELISA		RAT	PROGRANULIN ELISA	
	HUMAN	MIDKINE ELISA		HUMAN	<b>PROINSULIN INTACT ELISA (IVD CE)</b>	
	HUMAN	MONOCYTE CHEMOTACTIC PROTEIN-1 ELISA		CANINE	PROLACTIN ELISA	
	MOUSE	MONOCYTE CHEMOTACTIC PROTEIN-1 ELISA		HUMAN	PROLACTIN ELISA	
	HUMAN	MPO ELISA		MOUSE	PROLACTIN ELISA	
	HUMAN	Mxα PROTEIN ELISA		RAT	PROLACTIN ELISA	
	HUMAN	MyBPC3 ELISA		RAT	PROLACTIN-RELEASING PEPTIDE (1-31)ELISA, HIGH SENSITIVITY	
					PRORENIN ELISA	
<b>N</b>	HUMAN	NEURON SPECIFIC ENOLASE ELISA		HUMAN	TOTAL PRORENIN/RENIN ELISA	
	HUMAN/ PORCINE/ CANINE	NEURONOSTATIN-13 ELISA, HIGH SENSITIVITY		HUMAN	PROSTAGLANDIN D SYNTHASE (LIPOCALIN-TYPE) ELISA	
	HUMAN	NEUROSERPIN ELISA		HUMAN	PROSTATE SECRETORY PROTEIN 94 ELISA	
	RAT	NEUROTENSIN ELISA, HIGH SENSITIVITY		HUMAN	PROTEINASE 3 (PR3) ELISA	
	HUMAN/RAT	NO SYNTHASE I ELISA		MOUSE	PROTEINASE 3 (PR3) ELISA	
	HUMAN	<b>NT-proANP ELISA (IVD CE)</b>		HUMAN	PROUROGUANYLIN ELISA	
	HUMAN	NT-proBNP ELISA		HUMAN	sPSGL-1 ELISA	
				HUMAN	PYRUVATE KINASE M2 ELISA	
<b>O</b>	HUMAN	OBESTATIN ELISA		<b>Q</b>	RAT	QUALITY CONTROL SET
	MOUSE/RAT	OBESTATIN ELISA				
	MOUSE/RAT/ PORCINE/ CANINE	OCTREOTIDE		<b>R</b>	HUMAN	sRAGE ELISA
	HUMAN	OMENTIN-1 ELISA			HUMAN	sRANKL (TOTAL) ELISA (OSTEOPROTEGERIN LIGAND)
	HUMAN	OSTEOCALCIN (OST) ELISA			HUMAN	RBP4 ELISA
	HUMAN	OSTEOPONTIN ELISA			HUMAN	RBP4 ELISA, HIGH SENSITIVITY
	HUMAN	<b>OSTEOPROTEGERIN ELISA (IVD CE)</b>			MOUSE/RAT	RBP4 ELISA
					HUMAN	ACTIVE RENIN ELISA
<b>P</b>	HUMAN	p53 ELISA			HUMAN	RENIN ELISA
	HUMAN	PAI-1 ELISA			HUMAN	<b>RESISTIN ELISA (IVD CE)</b>
	HUMAN	PARAOXONASE 1 ELISA			RAT	RESISTIN ELISA
	HUMAN	PARATHYROID HORMONE (PTH) ELISA			MOUSE	IgG RHEUMATOID FACTOR ELISA
	HUMAN	<b>PCSK9 ELISA (IVD CE)</b>			MOUSE	IgM RHEUMATOID FACTOR ELISA
	HUMAN	sPECAM-1 ELISA		<b>S</b>	HUMAN	S100A8/A9 ELISA
	MONKEY	sPECAM-1 ELISA			HUMAN	S100A12
	HUMAN	PEDF ELISA			HUMAN	S100B ELISA
	HUMAN	<b>PENTRAXIN 3 ELISA (IVD CE)</b>				S-ADENOSYL HOMOCYSTEIN (SAH) ELISA
	HUMAN	PEPSINOGEN I ELISA			HUMAN	S-ADENOSYL HOMOCYSTEIN (SAH) ELISA
	HUMAN	PEPSINOGEN II ELISA				S-ADENOSYL METHIONINE (SAM) ELISA
	MOUSE/RAT/ PORCINE/ CANINE	PEPTIDE YY ELISA, HIGH SENSITIVITY			HUMAN	S-ADENOSYL METHIONINE (SAM) ELISA
	HUMAN	PEPTIDE YY ELISA, HIGH SENSITIVITY			HUMAN	SEX HORMONE BINDING GLOBULIN ELISA
	HUMAN	PERFORIN ELISA				<b>SDMA ELISA (IVD CE)</b>
	HUMAN	PERIOSTIN ELISA				SDMA vet ELISA
	MOUSE	PERIOSTIN ELISA			HUMAN	sE-SELECTIN ELISA
	HUMAN	PEROXIREDOXIN 1 ELISA			MONKEY	sE-SELECTIN ELISA
	HUMAN	PEROXIREDOXIN 3 ELISA			HUMAN	sL-SELECTIN ELISA
	HUMAN	PHOSPHORYLATED NEUROFILAMENT H ELISA			HUMAN	sP-SELECTIN ELISA
	HUMAN	PLACENTAL GROWTH FACTOR ELISA			MONKEY	P-SELECTIN ELISA
	HUMAN	PLACENTAL LACTOGEN ELISA			HUMAN	SECRETAGOGIN ELISA
					HUMAN	SECRETORY IgA ELISA
					HUMAN	SERGLYCIN ELISA
					HUMAN	SPERM-ANTIBODY ELISA

# IMMUNOASSAYS

HUMAN STANNIocalcin 1 ELISA  
 HUMAN STEM CELL FACTOR RECEPTOR (CD117) ELISA  
 HUMAN SURFACTANT PROTEIN A ELISA  
 HUMAN **SURFACTANT PROTEIN D ELISA (IVD CE)**  
 HUMAN suPAR ELISA  
 HUMAN Cu/Zn SUPEROXIDE DISMUTASE ELISA  
 HUMAN SUPEROXIDE DISMUTASE 1 ELISA  
 HUMAN SUPEROXIDE DISMUTASE 2 ELISA  
 HUMAN SUPEROXIDE DISMUTASE 3 ELISA  
 HUMAN SYNDECAN-1 (CD138) ELISA  
 MOUSE SYNDECAN-1 (CD138) ELISA

**T** HUMAN TAU (pS199) ELISA  
 HUMAN TAU (pS396) ELISA  
 HUMAN TAU (pT181) ELISA  
 HUMAN TAU (pT231) ELISA  
 HUMAN TAU (TOTAL) ELISA  
 MOUSE TAU (TOTAL) ELISA  
 TESTOSTERONE ELISA  
 TESTOSTERONE FREE IN SALIVA ELISA  
 MOUSE/RAT TESTOSTERONE ELISA  
 HUMAN **sTFR ELISA (IVD CE)**  
 HUMAN TGF-BETA1 ELISA  
 MOUSE TGF-BETA1 ELISA  
 RAT TGF-BETA1 ELISA  
 HUMAN TGF-BETA2 ELISA  
 HUMAN THIOREDOXIN 1 ELISA  
 HUMAN THIOREDOXIN REDUCTASE 1 ELISA  
 HUMAN THROMBOMODULIN (CD141) ELISA  
 CANINE THYROID STIMULATING HORMONE ELISA  
 CANINE THYROID STIMULATING HORMONE CONTROL SET  
 HUMAN THYROID STIMULATING HORMONE ELISA  
 RAT THYROID STIMULATING HORMONE ELISA  
 HUMAN THYROXINE, FREE (FT4) ELISA  
 HUMAN THYROXINE, TOTAL (T4) ELISA  
 HUMAN TIE-2 ELISA  
 HUMAN TIMP-1 ELISA  
 TM-CYFRA 21-1 ELISA  
 HUMAN TNF-ALPHA ELISA  
 HUMAN TNF-ALPHA ELISA, HIGH SENSITIVITY  
 HUMAN TNF-ALPHA TOTAL ELISA  
 MONKEY TNF-ALPHA ELISA  
 MOUSE TNF-ALPHA ELISA  
 PORCINE TNF-ALPHA ELISA  
 RAT TNF-ALPHA ELISA  
 HUMAN TNF-BETA ELISA  
 HUMAN sTNF-R (60 kDA) ELISA  
 HUMAN sTNF-R (80kDA) ELISA  
 MONKEY sTNF-R I ELISA  
 HUMAN t-PA ELISA  
 HUMAN TRAIL ELISA  
 HUMAN TRAIL RECEPTOR 1 (CD261) ELISA  
 HUMAN TRAIL RECEPTOR 2 (CD262) ELISA  
 HUMAN TRAIL RECEPTOR 3 (CD263) ELISA  
 HUMAN TRAIL RECEPTOR 4 (CD264) ELISA  
 TRAINING ELISA KIT  
 MINI TRAINING ELISA KIT  
 RAT TRANSFERRIN ELISA  
 HUMAN TRAP 5 ASSAY  
 HUMAN TRIIODOTHYRONINE, FREE (FT3) ELISA  
 HUMAN TRIIODOTHYRONINE, TOTAL (T3) ELISA

REVERSE T3 (RT3) ELISA  
 HUMAN TROPONIN I ELISA  
 HUMAN TSH RECEPTOR AUTOANTIBODY ELISA 2. GENERATION

**U** MOUSE UROCORTIN 2 ELISA  
 MOUSE/RAT UROCORTIN 3 ELISA  
 CANINE UROMODULIN ELISA  
 HUMAN **UROMODULIN ELISA (IVD CE)**

**V** HUMAN sVAP-1 ELISA  
 HUMAN VASPIN ELISA  
 HUMAN sVCAM-1 ELISA  
 HUMAN sVE-CADHERIN ELISA  
 HUMAN VEGF-A ELISA  
 MOUSE VEGF-A ELISA  
 HUMAN VEGF-C ELISA  
 RAT VEGF-C ELISA  
 HUMAN sVEGF-R1 ELISA  
 HUMAN VEGF-R1/FLT-1 ELISA  
 HUMAN VEGF-R2/KDR ELISA  
 HUMAN VEGF-R3/FLT-4 ELISA  
 HUMAN VILIP-1 ELISA  
 HUMAN VISFATIN (NAMPT) (INTRACELLULAR) ELISA  
 HUMAN VISFATIN (NAMPT) ELISA  
 MOUSE/RAT VISFATIN (NAMPT) ELISA

**Z** HUMAN ZINC-ALPHA-2-GLYCOPROTEIN ELISA  
 HUMAN ZINC TRANSPORTER 8 AUTOANTIBODY ELISA



# ANTIBODIES

## ANTIBODIES

<b>A</b>	HUMAN	ACYLATION STIMULATING PROTEIN, MOUSE MAb, CLONE: 4H3	CANINE	CYSTATIN C, SHEEP PAb		
	HUMAN	ADIPOCYTE FABP, GOAT PAb	MOUSE	CYSTATIN C, SHEEP PAb		
	HUMAN	ADIPOCYTE FABP, RABBIT PAb	RAT	CYSTATIN C, SHEEP PAb		
	HUMAN	ADIPONECTIN (HEK), GOAT PAb	HUMAN	CYSTEINE-RICH SECRETORY PROTEIN 1, RABBIT PAb		
	HUMAN	ADIPONECTIN (HEK), RABBIT PAb	HUMAN	CYSTEINE-RICH SECRETORY PROTEIN 1, SHEEP PAb		
	MOUSE	ADIPONECTIN (HEK), RABBIT PAb	<b>D</b>	HUMAN	DECORIN, RABBIT PAb	
	PORCINE	ADIPONECTIN (HEK), RABBIT PAb		HUMAN	DECORIN, SHEEP PAb	
	HUMAN	ADIPONECTIN (HEK), SHEEP PAb	<b>E</b>	HUMAN	ENDOSTATIN, RABBIT PAb	
	PORCINE	ADIPONECTIN (HEK), SHEEP PAb		HUMAN	ENPP1 (HEK), RABBIT PAb	
	HUMAN	ADIPONECTIN, MOUSE MAb, CLONE: 5E4	HUMAN	ENPP1 (HEK), SHEEP PAb		
	HUMAN	ADIPONECTIN, MOUSE MAb, CLONE: 7C11	HUMAN	EP-CAM (MK-1), MOUSE MAb, CLONE: MK-1-25		
	HUMAN	ADIPONECTIN, RABBIT PAb	HUMAN	EP-CAM (MK-1), MOUSE MAb, CLONE: MK-1-410		
	HUMAN	ADIPOPHILIN, RABBIT PAb	HUMAN	EPIDERMAL FABP, RABBIT PAb		
	HUMAN	ADIPOPHILIN, SHEEP PAb	HUMAN	EPIDERMAL FABP, SHEEP PAb		
	HUMAN	AGOUTI-RELATED PROTEIN (AGRP), RABBIT PAb	<b>F</b>	HUMAN	FAM3B, RABBIT PAb	
	HUMAN	ALLOGRAFT INFLAMMATORY FACTOR 1, SHEEP PAb		HUMAN	FAM3B, SHEEP PAb	
	HUMAN	ANGIOPOIETIN-LIKE PROTEIN 3, RABBIT PAb		HUMAN	FETUIN-A (AHSG), GOAT PAb	
	HUMAN	ANGIOPOIETIN-LIKE PROTEIN 3, SHEEP PAb		HUMAN	FETUIN-A (AHSG), RABBIT PAb	
	HUMAN	ANGIOPOIETIN-LIKE PROTEIN 4 (HEK), SHEEP PAb		HUMAN	FETUIN-B (HEK), RABBIT PAb	
	HUMAN	ANGIOPOIETIN-LIKE PROTEIN 4, RABBIT PAb		HUMAN	FETUIN-B (HEK), SHEEP PAb	
	HUMAN	ANGIOPOIETIN-LIKE PROTEIN 4, SHEEP PAb		HUMAN	FIBROBLAST GROWTH FACTOR 19, RABBIT PAb	
	HUMAN	ANGIOSTATIN, RABBIT PAb		HUMAN	FIBROBLAST GROWTH FACTOR 19, SHEEP PAb	
	HUMAN	ANNEXIN A1, RABBIT PAb		HUMAN	FIBROBLAST GROWTH FACTOR 21, RABBIT PAb	
HUMAN	ANNEXIN A1, SHEEP PAb	HUMAN		FIBROBLAST GROWTH FACTOR 21, SHEEP PAb		
HUMAN	APOLIPOPROTEIN D, RABBIT PAb	HUMAN		FIBROBLAST GROWTH FACTOR 21 Tag-free, SHEEP PAb		
HUMAN	APOLIPOPROTEIN D, SHEEP PAb	MOUSE		FIBROBLAST GROWTH FACTOR 21, RABBIT PAb		
HUMAN	APOLIPOPROTEIN M, SHEEP PAb	HUMAN		FIBROBLAST GROWTH FACTOR 23, RABBIT PAb		
HUMAN	APOPTOSIS INHIBITOR OF MACROPHAGE, SHEEP PAb	HUMAN	FOLLISTATIN, SHEEP PAb			
HUMAN	ARGINASE-I (LIVER TYPE), MOUSE MAb, CLONE: 6G3	<b>G</b>	HUMAN	GLUCOSE-REGULATED PROTEIN 78, SHEEP PAb		
<b>B</b>	HUMAN		BETA-MICROSEMINOPROTEIN, RABBIT PAb	HUMAN	GRANULYSIN, RABBIT PAb	
	HUMAN		BETA-MICROSEMINOPROTEIN, SHEEP PAb	HUMAN	GRANULYSIN, SHEEP PAb	
<b>C</b>	HUMAN	CARDIOTROPHIN-1, MOUSE MAb, CLONE: 1F3	<b>H</b>	HUMAN	HEPATITIS B PROTEIN X (HBX) VIRUS, RABBIT PAb	
	HUMAN	CARDIOTROPHIN-1, MOUSE MAb, CLONE: 3G6D9		<b>I</b>	HUMAN	INSULIN RECEPTOR, SHEEP PAb
	HUMAN	CARDIOTROPHIN-1, RABBIT PAb	HUMAN		INTERLEUKIN-33, RABBIT PAb	
	HUMAN	CATHEPSIN K, MOUSE MAb, CLONE: 3F9	HUMAN		INTERLEUKIN-33, SHEEP PAb	
	HUMAN	CLUB CELL PROTEIN (CC16), RABBIT PAb	<b>L</b>	HUMAN	LEPTIN RECEPTOR, MOUSE MAb, CLONE: LPR-01	
	HUMAN	CLUSTERIN, MOUSE MAb, CLONE: HS-3		HUMAN	LEPTIN RECEPTOR, MOUSE MAb, CLONE: LPR-02	
	HUMAN	CLUSTERIN, MOUSE MAb, CLONE: 8H4		HUMAN	LEPTIN, MOUSE MAb, CLONE: LEP-02	
	CANINE	CLUSTERIN, RABBIT PAb		HUMAN	LEPTIN, RABBIT PAb	
	RAT	CLUSTERIN, RABBIT PAb		MOUSE	LEPTIN, RABBIT PAb	
	CANINE	CLUSTERIN, SHEEP PAb		RAT	LEPTIN, RABBIT PAb	
	HUMAN	COMP, MOUSE MAb, CLONE: 12C4		HUMAN	LEUCINE-RICH ALPHA-2-GLYCOPROTEIN, RABBIT PAb	
	HUMAN	COMP, MOUSE MAb, CLONE: 16F12		HUMAN	LEUCINE-RICH ALPHA-2-GLYCOPROTEIN, SHEEP PAb	
	HUMAN	COMP, MOUSE MAb, CLONE: 17C10		HUMAN	LIVER FATTY ACID BINDING PROTEIN, SHEEP PAb	
	HUMAN	CONNECTIVE TISSUE GROWTH FACTOR, RABBIT PAb		<b>M</b>	HUMAN	MAMMAGLOBIN A, SHEEP PAb
	HUMAN	CONNECTIVE TISSUE GROWTH FACTOR, SHEEP PAb			HUMAN	MIDKINE, RABBIT PAb
	HUMAN	CORNIFIN-B, SHEEP PAb	HUMAN		MYOSIN (CARDIAC) LIGHT CHAIN, RABBIT PAb	
	HUMAN	CRFBP, SHEEP PAb	<b>N</b>		HUMAN	NESFATIN-1, SHEEP PAb
	HUMAN	CXCL12, RABBIT PAb			HUMAN	NEUDESIN, RABBIT PAb
	HUMAN	CXCL12, SHEEP PAb			HUMAN	NEUDESIN, SHEEP PAb
	HUMAN	CYSTATIN C (E.COLI), RABBIT PAb			HUMAN	NEUROGLOBIN, MOUSE MAb, CLONE: 13C8
	HUMAN	CYSTATIN C (E.COLI), SHEEP PAb	HUMAN	NEUROSERPIN, RABBIT PAb		
	CANINE	CYSTATIN C, RABBIT PAb				
	HUMAN	CYSTATIN C, RABBIT PAb				
	MOUSE	CYSTATIN C, RABBIT PAb				

# ANTIBODIES

	HUMAN	NEUROSERPIN, SHEEP PAb		RAT	SECRETAGOGIN, RABBIT PAb
	HUMAN	NT-proANP, SHEEP PAb		HUMAN	SECRETAGOGIN, SHEEP PAb
<b>O</b>	HUMAN	OMENTIN-1, RABBIT PAb		HUMAN	sPLA2-IB, RABBIT PAb
	HUMAN	OMENTIN-1, SHEEP PAb		HUMAN	sPLA2-IIA, RABBIT PAb
	HUMAN	OSTEOACTIVIN/GPNMB (HEK), RABBIT PAb		HUMAN	sPLA2-IID, RABBIT PAb
	HUMAN	OSTEOACTIVIN/GPNMB (HEK), SHEEP PAb		HUMAN	sPLA2-IIe, RABBIT PAb
	HUMAN	OSTEOBLAST SPECIFIC FACTOR 1, RABBIT PAb		HUMAN	SPLA2-X, RABBIT PAb
	HUMAN	OSTEOBLAST SPECIFIC FACTOR 1, SHEEP PAb		HUMAN	sPLA2-XII, RABBIT PAb
	HUMAN	OSTEOBLAST SPECIFIC FACTOR 2, RABBIT PAb		HUMAN	sRAGE, SHEEP PAb
	HUMAN	OSTEOBLAST SPECIFIC FACTOR 2, SHEEP PAb		HUMAN	SRANK (SOLUBLE RANK RECEPTOR), RABBIT PAb
	HUMAN	OSTEOCRIN, RABBIT PAb		HUMAN	STANNIOCALCIN 1, RABBIT PAb
	HUMAN	OSTEOPROTEGERIN, MOUSE MAb, CLONE: OPG-01		HUMAN	STANNIOCALCIN 2, RABBIT PAb
	HUMAN	OSTEOPROTEGERIN, MOUSE MAb, CLONE: OPG-13		HUMAN	STANNIOCALCIN 2, SHEEP PAb
<b>P</b>	HUMAN	PARAOXONASE 1, SHEEP PAb	<b>T</b>	HUMAN	STFR, MOUSE MAb, CLONE: TFR-01
	HUMAN	PCSK9, RABBIT PAb		HUMAN	THYROSTIMULIN BETA SUBUNIT, RABBIT PAb
	HUMAN	PCSK9, SHEEP PAb		HUMAN	THYROSTIMULIN BETA SUBUNIT, SHEEP PAb
	HUMAN	PIGMENT EPITHELIUM-DERIVED FACTOR, RABBIT PAb		HUMAN	TRAP 5, MOUSE MAb, CLONE: TRAP-01
	HUMAN	PIGMENT EPITHELIUM-DERIVED FACTOR, SHEEP PAb		HUMAN	TREFOIL FACTOR 1, RABBIT PAb
	HUMAN	PLACENTAL PROTEIN 13, RABBIT PAb		HUMAN	TREFOIL FACTOR 1, SHEEP PAb
	HUMAN	PLACENTAL PROTEIN 13, SHEEP PAb		HUMAN	TREFOIL FACTOR 2, RABBIT PAb
	CANINE	PROCALCITONIN, RABBIT PAb		HUMAN	TREFOIL FACTOR 2, SHEEP PAb
	CANINE	PROCALCITONIN, SHEEP PAb		HUMAN	TREFOIL FACTOR 3, RABBIT PAb
	HUMAN	PROCATHEPSIN K, MOUSE MAb, CLONE: 4B9		HUMAN	TREFOIL FACTOR 3, SHEEP PAb
	HUMAN	PROCATHEPSIN K, RABBIT PAb	<b>U</b>	HUMAN	URINARY TRYPSIN INHIBITOR, RABBIT PAb
	HUMAN	PROHIBITIN, RABBIT PAb		HUMAN	UROMODULIN, RABBIT PAb
	HUMAN	PROHIBITIN, SHEEP PAb		HUMAN	UROMODULIN, SHEEP PAb
	HUMAN	PROLACTIN-INDUCIBLE PROTEIN, RABBIT PAb	<b>V</b>	HUMAN	VISININ-LIKE PROTEIN 1, RABBIT PAb
	HUMAN	PROLACTIN-INDUCIBLE PROTEIN, SHEEP PAb		HUMAN	VISININ-LIKE PROTEIN 1, SHEEP PAb
	HUMAN	PROSTAGLANDIN-D SYNTHASE (LIPOCALIN-TYPE), RABBIT PAb	<b>Z</b>	HUMAN	ZINC-ALPHA-2-GLYCOPROTEIN, RABBIT PAb
	HUMAN	PROSTAGLANDIN-D SYNTHASE (LIPOCALIN-TYPE), SHEEP PAb		HUMAN	ZINC-ALPHA-2-GLYCOPROTEIN, SHEEP PAb
<b>R</b>	HUMAN	REGENERATING ISLET-DERIVED PROTEIN 3 (REG3A/PAP1), RABBIT PAb		HUMAN	ZYMOGEN GRANULE MEMBRANE PROTEIN 16, RABBIT PAb
	HUMAN	REGENERATING PROTEIN 1 ALPHA, RABBIT PAb		HUMAN	ZYMOGEN GRANULE MEMBRANE PROTEIN 16, SHEEP PAb
	HUMAN	REGUCALCIN, RABBIT PAb			
	HUMAN	REGUCALCIN, SHEEP PAb			
	HUMAN	RESISTIN, GOAT PAb			
	HUMAN	RESISTIN, RABBIT PAb			
	RAT	RESISTIN, RABBIT PAb			
<b>S</b>	HUMAN	S100A5, SHEEP PAb			
	HUMAN	S100A6, RABBIT PAb			
	HUMAN	S100A6, SHEEP PAb			
	HUMAN	S100A8, SHEEP PAb			
	HUMAN	S100A9, SHEEP PAb			
	HUMAN	S100A10, SHEEP PAb			
	HUMAN	S100A11, SHEEP PAb			
	HUMAN	S100A12, RABBIT PAb			
	HUMAN	S100A12, SHEEP PAb			
	HUMAN	S100A13, SHEEP PAb			
	HUMAN	S100A14, SHEEP PAb			
	HUMAN	S100A16, RABBIT PAb			
	HUMAN	S100A16, SHEEP PAb			
	HUMAN	S100G, SHEEP PAb			
	HUMAN	S100P, RABBIT PAb			
	HUMAN	S100P, SHEEP PAb			
	HUMAN	SECRETAGOGIN, RABBIT PAb			

# PROTEINS

PROTEINS					
Rec.	HUMAN	4-1BB LIGAND	Rec.	HUMAN	BAFF
Rec.	HUMAN	4-1BB RECEPTOR	Rec.	HUMAN	BAFF RECEPTOR
Rec.	HUMAN	6-PHOSPHOGLUCONATE DEHYDROGENASE, DECARBOXYLATING	Rec.	HUMAN	BCA-1/BLC
<b>A</b>	HUMAN		Rec.	MOUSE	BCA-1/BLC
Rec.	RAT	ACTIVIN A	Rec.	HUMAN	BD-1
	MOUSE		Rec.	HUMAN	BD-4
Rec.	HUMAN	ACTIVIN B	Rec.	HUMAN	BETACELLULIN
Nat.	HUMAN	ADIPOCYTE FABP	Rec.	MOUSE	BETACELLULIN
Rec.	HUMAN	ADIPOCYTE FABP, Tag-free	Rec.	HUMAN	BETA-MICROSEMINOPROTEIN
Nat.	HUMAN	ADIPONECTIN	Rec.	HUMAN	BETATROPHIN
Rec.	HUMAN	ADIPONECTIN	Rec.	MOUSE	BETATROPHIN
Rec.	HUMAN	ADIPONECTIN (HMW-rich), Tag-free	Rec.	RAT	BETATROPHIN
Rec.	HUMAN	ADIPONECTIN (Trimeric form)	Nat.	HUMAN	BILE SALT-ACTIVATED LIPASE
Rec.	MOUSE	ADIPONECTIN	Rec.	HUMAN	BMP-3
Rec.	MOUSE	ADIPONECTIN, Tag-free	Rec.	HUMAN	BMP-5
Rec.	MOUSE	ADIPONECTIN (Trimeric form)	Rec.	HUMAN	BMP-6
Rec.	PORCINE	ADIPONECTIN	Rec.	HUMAN	BONE MORPHOGENETIC PROTEIN-2
Rec.	RAT	ADIPONECTIN	Rec.	HUMAN	BONE MORPHOGENETIC PROTEIN-4
Rec.	HUMAN	ADIPONECTIN, (GLOBULAR)	Rec.	MOUSE	BONE MORPHOGENETIC PROTEIN-4
Rec.	MOUSE	ADIPONECTIN	Rec.	HUMAN	BONE MORPHOGENETIC PROTEIN-7
Rec.	HUMAN	ADIPONECTIN SOLUTION	Rec.	HUMAN	BRAIN FABP
Rec.	HUMAN	ADIPOPHILIN	Rec.	HUMAN	BRAIN-DERIVED NEUROTROPHIC FACTOR PROPEPTIDE
Rec.		AEROMONAS AMINOPEPTIDASE	Rec.	HUMAN	BRK
Rec.	HUMAN	AGOUTI-RELATED PROTEIN	<b>C</b>	MOUSE	C10
Rec.	HUMAN	AITRL	Rec.	HUMAN	CADHERIN-1
Rec.	HUMAN	ALLOGRAFT INFLAMMATORY FACTOR 1	Rec.	HUMAN	CALMODULIN-LIKE PROTEIN 5
Nat.	HUMAN	ALPHA-1-ACID GLYCOPROTEIN	Rec.	RAT	CARBOXYPEPTIDASE-B
Rec.	HUMAN	ALPHA-DYSTROGLYCAN N-TERMINAL DOMAIN	Rec.	HUMAN	CARDIOTROPHIN-1
Rec.	HUMAN	AMINOACYLASE-1	Rec.	MOUSE	CARDIOTROPHIN-1
Rec.	HUMAN	AMPHIREGULIN	Rec.	HUMAN	CARTILAGE OLIGOMERIC MATRIX PROTEIN
Rec.	HUMAN	ANG-1	Rec.	HUMAN	CCL2 (MCP-1)
Rec.	HUMAN	ANG-2	Rec.	HUMAN	CCL3 (MIP-1 $\alpha$ )
Rec.	HUMAN	ANGIOPOIETIN-LIKE PROTEIN 2	Rec.	HUMAN	CCL5 (RANTES)
Rec.	HUMAN	ANGIOPOIETIN-LIKE PROTEIN 3	Rec.	HUMAN	CCL7 (MCP-3)
Rec.	HUMAN	ANGIOPOIETIN-LIKE PROTEIN 4	Rec.	HUMAN	CCL7 (MCP-3)
Rec.	HUMAN	ANGIOPOIETIN-LIKE PROTEIN 6	Rec.	HUMAN	CCL17
Rec.	HUMAN	ANGIOTENSINOGEN	Rec.	HUMAN	CCL19 (MIP-3 $\beta$ )
Rec.	HUMAN	ANNEXIN A1	Rec.	HUMAN	CCL27 (CTACK)
Rec.	HUMAN	ANNEXIN A2	Rec.	HUMAN	CCL28 (MEC)
Rec.	HUMAN	APOA-I	Rec.	HUMAN	CD5 ANTIGEN-LIKE
Rec.	HUMAN	APOE2	Rec.	HUMAN	sCD14
Rec.	HUMAN	APOE3	Rec.	HUMAN	sCD22
Rec.	HUMAN	APOE4	Rec.	HUMAN	sCD23
Rec.	HUMAN	APOLIPOPROTEIN A5	Rec.	HUMAN	sCD27 LIGAND
Rec.	HUMAN	APOLIPOPROTEIN D	Rec.	HUMAN	sCD30 LIGAND
Rec.	HUMAN	APOLIPOPROTEIN M	Rec.	HUMAN	sCD34
Rec.	HUMAN	APO-SAA1	Rec.	HUMAN	sCD40 LIGAND
Rec.	MOUSE	APRIL	Rec.	MOUSE	sCD40 LIGAND
Rec.	HUMAN	APRIL	Rec.	HUMAN	sCD100
Rec.	HUMAN	ARGONAUTE-2	Rec.	HUMAN	CDNF
Rec.	HUMAN	ARGONAUTE-2 N-TERMINAL REGION	Rec.	HUMAN	CELL DEATH-INDUCING DFFA-LIKE EFFECTOR C
Rec.	HUMAN	ARTEMIN	Rec.	HUMAN	CHEMERIN
Rec.	HUMAN	ATPASE INHIBITOR MITOCHONDRIAL	Rec.	HUMAN	CHITINASE-3-LIKE PROTEIN 2
<b>B</b>	HUMAN	$\beta$ -NGF	Rec.	HUMAN	CHROMOGRANIN A
	MOUSE	$\beta$ -NGF	Rec.	HUMAN	CLAUDIN-4
			Rec.	HUMAN	CLUB CELL PROTEIN (CC16)
			Rec.	CANINE	CLUSTERIN
			Rec.	HUMAN	CLUSTERIN
			Nat.	HUMAN	CLUSTERIN

# PROTEINS

Rec.	RAT	CLUSTERIN	Rec.	HUMAN	EGF RECEPTOR (EGFR)	
Rec.	HUMAN	CLUSTERIN, Tag-free	Rec.	HUMAN	EG-VEGF	
Rec.	HUMAN	CNTF	Rec.	HUMAN	ENA-78	
Rec.	RAT	CNTF	Rec.	HUMAN	ENA-78 (5-78 a.a.)	
Rec.	HUMAN	COLLECTRIN	Rec.	HUMAN	ENDOSTATIN	
Rec.	HUMAN	CORNIFIN-B	Rec.	HUMAN	ENDOTHELIAL CELL-SPECIFIC MOLECULE 1	
Rec.	HUMAN	CORTICOSTEROID-BINDING GLOBULIN	Rec.	HUMAN	ENDOTHELIAL LIPASE	
Rec.	MOUSE	CORTICOSTEROID-BINDING GLOBULIN	Rec.	HUMAN	ENPP1	
Rec.	HUMAN	CORTICOTROPIN-RELEASING FACTOR-BINDING PROTEIN	Rec.	HUMAN	ENTEROKINASE	
Rec.	CANINE	CRP, Tag-free	Rec.	HUMAN	EOTAXIN	
Rec.	HUMAN	CTACK	Rec.	MOUSE	EOTAXIN	
Rec.	MOUSE	CTACK	Rec.	HUMAN	EOTAXIN-2	
Rec.	HUMAN	CTGF	Rec.	MOUSE	EOTAXIN-2	
Rec.	HUMAN	CTGF, Tag-free	Rec.	HUMAN	EOTAXIN-3	
Rec.	HUMAN	CTGF TSP TYPE-1 DOMAIN	Rec.	HUMAN	EPHRIN TYPE-A RECEPTOR 2	
Rec.	HUMAN	CTGFL/WISP-2	Rec.	HUMAN	EPHRIN-A1	
Rec.	HUMAN	CTHRP 1	Rec.	HUMAN	EPIDERMAL FABP, Tag-free	
Rec.	HUMAN	CTRP1	Rec.	HUMAN	EPIGEN	
Rec.	HUMAN	CTRP2	Rec.	HUMAN	EPIREGULIN	
Rec.	HUMAN	CTRP3	Rec.	HUMAN	E-SELECTIN	
Rec.	HUMAN	CTRP4	Rec.	HUMAN	EXODUS-2	
Rec.	HUMAN	CTRP6	Rec.	MOUSE	EXODUS-2	
Rec.	HUMAN	CTRP7				
Rec.	HUMAN	CTRP8	<b>F</b>	Rec.	HUMAN	FABP 12
Rec.	HUMAN	CTRP9A	Rec.	HUMAN	FAIM3	
Rec.	HUMAN	CUB AND ZONA PELLUCIDA-LIKE DOMAIN-CONTAINING PROTEIN 1	Rec.	HUMAN	FAM19A5	
Rec.	HUMAN	CXCL12 (SDF-1 $\alpha$ )	Rec.	HUMAN	FAM3A	
Rec.	HUMAN	CXCL12 (SDF-1 $\alpha$ ) (Biotinylated)	Rec.	HUMAN	FAM3B	
Rec.	HUMAN	CXCL12 (SDF-1 $\alpha$ )	Rec.	HUMAN	FAM3C	
Rec.	HUMAN	CXCL16	Rec.	HUMAN	FAM3D	
Rec.	MOUSE	CXCL16	Rec.	HUMAN	sFAS LIGAND	
Rec.	HUMAN	CXCL8 (IL-8)	Rec.	HUMAN	sFAS RECEPTOR	
Rec.	HUMAN	CYCLOPHILIN A	Rec.	HUMAN	sFRP-1	
Rec.	MOUSE	CYCLOPHILIN A	Rec.	HUMAN	sFRP4	
Rec.	RAT	CYCLOPHILIN A	Rec.	HUMAN	FETUIN A/AHSG	
Rec.	HUMAN	CYCLOPHILIN B	Rec.	HUMAN	FETUIN-A (AHSG)	
Rec.	HUMAN	CYCLOPHILIN C	Nat.	HUMAN	FETUIN-A (AHSG)	
Rec.	HUMAN	CYCLOPHILIN E	Rec.	HUMAN	FETUIN-B	
Rec.	HUMAN	CYCLOPHILIN F	Rec.	HUMAN	FGF-4	
Rec.	HUMAN	CYCLOPHILIN H	Rec.	HUMAN	FGF-5	
Rec.	HUMAN	CYCLOPHILIN-40	Rec.	HUMAN	FGF-6	
Rec.	HUMAN	CYR61	Rec.	HUMAN	FGF-8	
Rec.	CANINE	CYSTATIN C	Rec.	HUMAN	FGF-9	
Nat.	HUMAN	CYSTATIN C	Rec.	MOUSE	FGF-9	
Rec.	HUMAN	CYSTATIN C	Rec.	HUMAN	FGF-10	
Rec.	MOUSE	CYSTATIN C	Rec.	HUMAN	FGF-16	
Rec.	RAT	CYSTATIN C	Rec.	HUMAN	FGF-17	
Rec.	HUMAN	CYSTEINE-RICH SECRETORY PROTEIN 1	Rec.	HUMAN	FGF-18	
Rec.	HUMAN	CYSTEINE-RICH SECRETORY PROTEIN 2	Rec.	HUMAN	FGF-20	
Rec.	HUMAN	CYSTEINE-RICH SECRETORY PROTEIN 3	Rec.	HUMAN	FGF-ACIDIC	
Rec.	HUMAN	CYTOKINE-LIKE PROTEIN 1	Rec.	MOUSE	FGF-ACIDIC	
			Rec.	RAT	FGF-ACIDIC	
			Rec.	HUMAN	FGF-BASIC	
			Rec.	MOUSE	FGF-BASIC	
<b>D</b>	Rec.	HUMAN	DECORIN	Rec.	RAT	FGF-BASIC
	Rec.	HUMAN	DIPEPTIDYL PEPTIDASE IV (DPIV)	Rec.	MOUSE	FGF-15
	Rec.	HUMAN	DKK-1	Rec.	HUMAN	FGF-19
				Rec.	HUMAN	FGF-2 STABLE
<b>E</b>	Rec.	HUMAN	EGF	Rec.	HUMAN	FGF-21
	Rec.	MOUSE	EGF	Rec.	HUMAN	FGF-21, Tag-free
	Rec.	RAT	EGF	Rec.	MOUSE	FGF-21

# PROTEINS

Rec. MOUSE FGF-21, Tag-free  
 Rec. HUMAN FGF-23 C-TERMINAL PEPTIDE  
 Rec. HUMAN FIBROBLAST GROWTH FACTOR-2  
 Rec. HUMAN FIBRINOGEN-LIKE PROTEIN 1  
 Rec. HUMAN Fit3-LIGAND  
 Rec. MOUSE Fit3-LIGAND  
 Rec. HUMAN FOLLISTATIN  
 Rec. HUMAN FOLLISTATIN-RELATED PROTEIN 1  
 Rec. HUMAN FRACTALKINE  
 Rec. RAT FRACTALKINE  
 Rec. HUMAN FURIN

**G** Rec. MOUSE GACRP30  
 Rec. HUMAN gAcrp30/ADIPOLEAN  
 Rec. HUMAN gAcrp30/ADIPOLEAN VARIANT  
 Rec. HUMAN GALECTIN-1  
 Rec. HUMAN GALECTIN-3  
 Rec. HUMAN GALECTIN-9  
 Rec. HUMAN GANGLIOSIDE GM2 ACTIVATOR  
 Rec. HUMAN GASP-1  
 Rec. HUMAN GASTROKINE-1  
 Rec. HUMAN GASTROKINE-2  
 Rec. HUMAN GASTROKINE-3  
 Rec. HUMAN GASTROTROPIN  
 Rec. HUMAN GCP-2  
 Rec. HUMAN G-CSF  
 Rec. MOUSE G-CSF  
 Rec. HUMAN GDF-11  
 Rec. HUMAN GDF-15/MIC-1  
 Rec. HUMAN GDF-2  
 Rec. HUMAN GDF-3  
 Rec. HUMAN GDF-5 (BMP-14/CDMP-1)  
 Rec. MOUSE GDF-5 (BMP-14/CDMP-1)  
 Rec. HUMAN GDF-7  
 Rec. HUMAN GDNF  
 Rec. MOUSE GDNF  
 Rec. RAT GDNF  
 Rec. HUMAN GDNF FAMILY RECEPTOR ALPHA-1  
 Rec. HUMAN GHRELIN - ACYLATED (GHRELIN-28)  
 Rec. HUMAN GLUCAGON-LIKE PEPTIDE-1 RECEPTOR  
 Rec. HUMAN GLUCAGON RECEPTOR  
 Rec. HUMAN GLUCOSE-REGULATED PROTEIN 78  
 Rec. HUMAN GLUTATHIONE S-TRANSFERASE KAPPA 1  
 Rec. HUMAN GLYPICAN-4  
 Rec. HUMAN GM-CSF  
 Rec. MOUSE GM-CSF  
 Rec. RAT GM-CSF  
 Rec. HUMAN GMF- $\beta$   
 Rec. HUMAN GP96 (HSP90B1)  
 Rec. HUMAN GRANULYSIN  
 Rec. MOUSE GRANZYME B BACULOVIRUS  
 Rec. HUMAN GREMLIN-1  
 Rec. RAT GRO/KC  
 Rec. HUMAN GRO/MGSA  
 Rec. HUMAN GROWTH DIFFERENTIATION FACTOR-3  
 Rec. HUMAN GRO- $\beta$   
 Rec. RAT GRO- $\beta$ /MIP-2  
 Rec. HUMAN GRO- $\gamma$   
 Rec. MOUSE GRO- $\gamma$

**H** Rec. HUMAN HB-EGF  
 Rec. HUMAN HCC-1  
 Rec. HUMAN HEART FABP  
 Rec. HUMAN HEAT SHOCK 10kDa PROTEIN, MITOCHONDRIAL  
 Rec. HUMAN HEAT SHOCK 70kDa PROTEIN 1A/1B  
 Rec. HELICOBACTER PYLORI HELICOBACTER PYLORI NEUTROPHIL-ACTIVATING PROTEIN A  
 Rec. HEPATITIS B VIRUS HEPATITIS B VIRUS PROTEIN X  
 Rec. HEPATITIS B VIRUS HEPATITIS B VIRUS PROTEIN X, Tag-free  
 Rec. HUMAN HEPATOCYTE GROWTH FACTOR  
 Rec. MOUSE HEPATOCYTE GROWTH FACTOR  
 Rec. HUMAN HEREGULIN $\beta$ -1  
 Rec. HUMAN HERSTATIN, Tag-free  
 Rec. HUMAN HIGH MOBILITY GROUP PROTEIN B1  
 Rec. HUMAN HISTONE H3.3  
 Rec. HIV-1 PROTEASE  
 Rec. HIV-2 PROTEASE  
 Rec. HUMAN HSP90 CO-CHAPERONE CDC37  
 Rec. HUMAN HVEM-FC

**I** Rec. HUMAN I-309  
 Rec. HUMAN IFN- $\beta$   
 Rec. HUMAN IFN- $\gamma$   
 Rec. MOUSE IFN- $\gamma$   
 Rec. RAT IFN- $\gamma$   
 Rec. HUMAN IFN- $\Lambda$ 1  
 Rec. HUMAN IFN- $\Lambda$ 2  
 Rec. MOUSE IFN- $\Lambda$ 2  
 Rec. HUMAN IFN- $\omega$   
 Rec. HUMAN IGF-BP1  
 Rec. HUMAN IGF-BP2  
 Rec. HUMAN IGF-BP3  
 Rec. HUMAN IGF-BP4  
 Rec. HUMAN IGF-BP5  
 Rec. HUMAN IGF-BP6  
 Rec. HUMAN IGF-BP7  
 Rec. HUMAN IGF-I  
 Rec. MOUSE IGF-I  
 Rec. HUMAN IL-2  
 Rec. HUMAN IL-4  
 Rec. HUMAN IL-34  
 Rec. HUMAN INOSITOL OXYGENASE  
 Rec. HUMAN INSL5/INSL7 HYBRID  
 Rec. HUMAN INSULIN LIKE GROWTH FACTOR- II  
 Rec. HUMAN INSULIN RECEPTOR  
 Rec. HUMAN INSULIN-DEGRADING ENZYME  
 Rec. HUMAN INSULIN-LIKE GROWTH FACTOR-BINDING PROTEIN  
 Rec. HUMAN INTERLEUKIN-1 $\alpha$   
 Rec. MOUSE INTERLEUKIN-1 $\alpha$   
 Rec. RAT INTERLEUKIN-1 $\alpha$   
 Rec. HUMAN INTERLEUKIN-1 $\beta$   
 Rec. MOUSE INTERLEUKIN-1 $\beta$   
 Rec. RAT INTERLEUKIN-1 $\beta$   
 Rec. HUMAN INTERLEUKIN-1RA  
 Rec. HUMAN INTERLEUKIN-2

# PROTEINS

Rec.	MOUSE	INTERLEUKIN-2	Rec.	HUMAN	INTERLEUKIN-36RA	
Rec.	RAT	INTERLEUKIN-2	Rec.	HUMAN	INTERLEUKIN-36B	
Rec.	HUMAN	siINTERLEUKIN-2R $\alpha$	Rec.	HUMAN	INTERLEUKIN-36 $\gamma$	
Rec.	HUMAN	INTERLEUKIN-3	Rec.	HUMAN	INTESTINAL FABP	
Rec.	MOUSE	INTERLEUKIN-3	Rec.	HUMAN	IP-10	
Rec.	RAT	INTERLEUKIN-3 $\beta$	Rec.	RAT	IP-10	
Rec.	HUMAN	INTERLEUKIN-4	Rec.	HUMAN	IRISIN	
Rec.	MOUSE	INTERLEUKIN-4	Rec.	HUMAN	I-TAC	
Rec.	RAT	INTERLEUKIN-4	Rec.	MOUSE	I-TAC	
Rec.	HUMAN	siINTERLEUKIN-4R $\alpha$				
Rec.	HUMAN	INTERLEUKIN-5	<b>J</b>	Rec.	MOUSE	JE/MCP-1
Rec.	MOUSE	INTERLEUKIN-5				
Rec.	RAT	INTERLEUKIN-5	<b>K</b>	Rec.	HUMAN	KALLISTATIN
Rec.	HUMAN	INTERLEUKIN-6	Rec.	MOUSE	KC	
Rec.	MOUSE	INTERLEUKIN-6	Rec.	HUMAN	KGF	
Rec.	RAT	INTERLEUKIN-6	Rec.	HUMAN	KIM-1	
Rec.	HUMAN	siINTERLEUKIN-6R $\alpha$	Rec.	HUMAN	KLF4-TAT	
Rec.	HUMAN	INTERLEUKIN-7	Rec.	HUMAN	KLOTHO CHO	
Rec.	MOUSE	INTERLEUKIN-7				
Rec.	RAT	INTERLEUKIN-7	<b>L</b>	Nat.	HUMAN	LACTOFERRIN
Rec.	HUMAN	INTERLEUKIN-8	Rec.	HUMAN	LAG-1	
Rec.	HUMAN	INTERLEUKIN-9	Rec.	HUMAN	LD78 $\beta$	
Rec.	MOUSE	INTERLEUKIN-9	Rec.	HUMAN	LEC	
Rec.	RAT	INTERLEUKIN-9	Rec.	HUMAN	LECITHIN-CHOLESTEROL ACYLTRANSFERASE	
Rec.	HUMAN	INTERLEUKIN-10	Rec.	HUMAN	LEPTIN, Tag-free	
Rec.	MOUSE	INTERLEUKIN-10	Rec.	MOUSE	LEPTIN, Tag-free	
Rec.	RAT	INTERLEUKIN-10	Rec.	RAT	LEPTIN, Tag-free	
Rec.	HUMAN	INTERLEUKIN-11	Nat.	CANINE	LEUCINE-RICH ALPHA-2-GLYCOPROTEIN	
Rec.	MOUSE	INTERLEUKIN-11	Nat.	HUMAN	LEUCINE-RICH ALPHA-2-GLYCOPROTEIN	
Rec.	HUMAN	INTERLEUKIN-12	Rec.	HUMAN	LEUKOCYTE CELL-DERIVED CHEMOTAXIN-2	
Rec.	MOUSE	INTERLEUKIN-12	Rec.	HUMAN	LIF	
Rec.	HUMAN	INTERLEUKIN-12 p40	Rec.	MOUSE	LIGHT	
Rec.	HUMAN	INTERLEUKIN-12 p80	Rec.	HUMAN	LIGHT	
Rec.	HUMAN	INTERLEUKIN-13	Rec.	HUMAN	LIN28-TAT	
Rec.	MOUSE	INTERLEUKIN-13	Rec.	HUMAN	LIPOCALIN-2/NGAL	
Rec.	RAT	INTERLEUKIN-13	Rec.	HUMAN	LIPOPROTEIN LIPASE	
Rec.	HUMAN	INTERLEUKIN-13 VARIANT	Rec.		LISOSTAPHIN	
Rec.	HUMAN	INTERLEUKIN-15	Rec.	HUMAN	LIVER FABP	
Rec.	MOUSE	INTERLEUKIN-15	Rec.	HUMAN	LIVER FABP, Tag-free	
Rec.	RAT	INTERLEUKIN-15	Rec.	MOUSE	LIX [70a.a.]	
Rec.	HUMAN	INTERLEUKIN-16	Rec.	MOUSE	LIX [92a.a.]	
Rec.	HUMAN	INTERLEUKIN-17			LOW-DENSITY LIPOPROTEIN RECEPTOR-RELATED PROTEIN 4	
Rec.	MOUSE	INTERLEUKIN-17	Rec.	HUMAN		
Rec.	HUMAN	INTERLEUKIN-17B	Rec.	MOUSE	LUNGKINE	
Rec.	HUMAN	INTERLEUKIN-17D	Rec.	HUMAN	LYMPHOTACTIN	
Rec.	HUMAN	INTERLEUKIN-17E	Rec.		LYSOBACTER ENZYMOGENES ARG-C	
Rec.	HUMAN	INTERLEUKIN-17F			LYSOPHOSPHATIDYLCHOLINE ACYLTRANSFERASE 1	
Rec.	MOUSE	INTERLEUKIN-17F	Rec.	HUMAN		
Rec.	HUMAN	INTERLEUKIN-19				
Rec.	HUMAN	INTERLEUKIN-20	<b>M</b>	Rec.	BETULA PENDULA	MAJOR POLLEN ALLERGEN BET V 1-A
Rec.	HUMAN	INTERLEUKIN-21	Rec.	MOUSE		MAJOR URINARY PROTEIN 1
Rec.	MOUSE	INTERLEUKIN-21	Rec.	HUMAN		MAMMAGLOBIN A (FC CHIMERA)
Rec.	HUMAN	INTERLEUKIN-22	Rec.	HUMAN		MANF
Rec.	MOUSE	INTERLEUKIN-22	Rec.	HUMAN		MASPIN
Rec.	HUMAN	INTERLEUKIN-23	Rec.	HUMAN		MCP-2
Rec.	HUMAN	INTERLEUKIN-24	Rec.	HUMAN		MCP-2
Rec.	HUMAN	INTERLEUKIN-31	Rec.	MOUSE		MCP-2
Rec.	MOUSE	INTERLEUKIN-31	Rec.	HUMAN		MCP-3
Rec.	HUMAN	INTERLEUKIN-33	Rec.	MOUSE		MCP-3
Rec.	MOUSE	INTERLEUKIN-33	Rec.	HUMAN		MCP-4
Rec.	HUMAN	INTERLEUKIN-34	Rec.	MOUSE		MCP-5

# PROTEINS

Rec.	HUMAN	M-CSF		Rec.	HUMAN	NKG2D LIGAND 3
Rec.	MOUSE	M-CSF		Rec.	HUMAN	NKG2D LIGAND 4
Rec.	RAT	M-CSF		Rec.	HUMAN	NNT-1/BCSF-3
Rec.	HUMAN	MDC		Rec.	HUMAN	NOGGIN
Rec.	MOUSE	MDC		Rec.	MOUSE	NOGGIN
Rec.	HUMAN	MEC		Rec.	HUMAN	NOV
Rec.	MOUSE	MEC		Rec.	HUMAN	NP-1
Rec.	HUMAN	METADHERIN		Rec.	HUMAN	NT-3
Rec.	HUMAN	METEORIN-LIKE PROTEIN		Rec.	HUMAN	NT-4
Rec.	HUMAN	MIA				
Rec.	HUMAN	MIA-2	<b>O</b>	Rec.	HUMAN	OMENTIN
Rec.	HUMAN	MIDKINE		Rec.	HUMAN	ONCOMODULIN-1
Rec.	MOUSE	MIDKINE		Rec.	HUMAN	ONCOSTATIN M
Rec.	HUMAN	MIF		Rec.	RAT	ONCOSTATIN M
Rec.	TRICHOMONAS VAGINALIS	MIF PROTEIN		Rec.	HUMAN	OSTEOACTIVIN/GPNMB
Rec.	HUMAN	MIG		Rec.	HUMAN	OSTEOBLAST SPECIFIC FACTOR 1
Rec.	MOUSE	MIG		Rec.	HUMAN	OSTEOBLAST SPECIFIC FACTOR 2
Rec.	HUMAN	MIP-1 $\alpha$		Rec.	HUMAN	OSTEOCLAST-ASSOCIATED IMMUNOGLOBULIN-LIKE RECEPTOR
Rec.	MOUSE	MIP-1 $\alpha$		Rec.	HUMAN	OSTEOCRIN
Rec.	RAT	MIP-1 $\alpha$		Rec.	HUMAN	OSTEOPONTIN
Rec.	HUMAN	MIP-1 $\beta$		Rec.	HUMAN	OSTEOPROTEGERIN
Rec.	MOUSE	MIP-1 $\beta$		Rec.	HUMAN	OSTEOSTAT
Rec.	RAT	MIP-1 $\beta$		Rec.	HUMAN	OTOR
Rec.	HUMAN	MIP-3		Rec.	HUMAN	OXIDIZED LOW-DENSITY LIPOPROTEIN RECEPTOR 1
Rec.	HUMAN	MIP-3 $\alpha$				
Rec.	MOUSE	MIP-3 $\alpha$				
Rec.	HUMAN	MIP-3 $\beta$	<b>P</b>	Rec.	HUMAN	p16-INK4a
Rec.	MOUSE	MIP-3 $\beta$		Rec.	HUMAN	p16-INK4a-TAT
Rec.	HUMAN	MIP-4		Rec.	HUMAN	PAF-AH
Rec.	HUMAN	MIP-5		Rec.	HUMAN	PAI-1
Rec.	HUMAN	MMP-1		Rec.	HUMAN	PAI-2
Rec.	HUMAN	MMP-2		Rec.	HUMAN	PANCREATITIS-ASSOCIATED PROTEIN-1
Rec.	HUMAN	MMP-3		Rec.	HUMAN	PARAOXONASE 1
Rec.	RAT	MONOCYTE CHEMOTACTIC PROTEIN-1		Rec.	HUMAN	PDGF-AA
Rec.	HUMAN	mu-CRYSTALLIN		Rec.	MOUSE	PDGF-AA
Rec.	HUMAN	MUELLERIAN-INHIBITING FACTOR		Rec.	HUMAN	PDGF-AB
Rec.	HUMAN	MYCOPLASMA ARGININE DEIMINASE (ADI)		Rec.	HUMAN	PDGF-BB
Rec.	HUMAN	MYDGF		Rec.	MOUSE	PDGF-BB
Rec.	HUMAN	MYELIN FABP		Rec.	HUMAN	PDGF-CC
Rec.	HUMAN	MYOSIN-BINDING PROTEIN C CARDIAC-TYPE		Rec.	HUMAN	PECAM-1
Rec.	HUMAN	MYOSTATIN PROPEPTIDE, Tag-free		Rec.	HUMAN	PENTRAXIN 3
				Rec.	HUMAN	PEPTIDASE INHIBITOR 16
<b>N</b>	Rec.	HUMAN		Rec.	HUMAN	PEPTIDOGLYCAN RECOGNITION PROTEIN 1
	Rec.	HUMAN		Rec.	HUMAN	PEPTIDYL-PROLYL CIS-TRANS ISOMERASE FKBP5
	Rec.	HUMAN		Rec.	HUMAN	PERSEPHIN
	Rec.	HUMAN		Rec.	MOUSE	PERSEPHIN
	Rec.	HUMAN		Rec.	HUMAN	PF-4
	Rec.	HUMAN		Rec.	MOUSE	PF-4
	Rec.	HUMAN		Rec.	HUMAN	PHOSPHOETHANOLAMINE/PHOSPHOCHOLINE PHOSPHATASE
	Rec.	HUMAN		Rec.	HUMAN	PIGMENT EPITHELIUM-DERIVED FACTOR
	Rec.	HUMAN		Rec.	HUMAN	sPLA2-IB
	Rec.	HUMAN		Rec.	HUMAN	sPLA2-IIA
	Rec.	HUMAN		Rec.	HUMAN	sPLA2-IID
	Rec.	MOUSE		Rec.	HUMAN	sPLA2-IIIE
	Rec.	HUMAN		Rec.	HUMAN	sPLA2-V
	Rec.	HUMAN		Rec.	HUMAN	sPLA2-X
	Rec.	HUMAN		Rec.	HUMAN	sPLA2-XII
	Rec.	HUMAN		Rec.	HUMAN	PLAC8

# PROTEINS

Rec.	HUMAN	PLACENTA GROWTH FACTOR	<b>S</b>	Rec.	HUMAN	S100A1
Rec.	HUMAN	PLACENTAL PROTEIN 13 (GALECTIN-13)		Rec.	HUMAN	S100A2
Rec.	HUMAN	PLATELET GLYCOPROTEIN 4		Rec.	HUMAN	S100A3
Rec.	HUMAN	PLGF-1		Rec.	HUMAN	S100A4
Rec.	HUMAN	PLGF-2		Rec.	HUMAN	S100A5
Rec.	HUMAN	PLGF-3		Rec.	HUMAN	S100A6
Rec.	HUMAN	PLUNC		Rec.	HUMAN	S100A7
Rec.	HUMAN	PODOCIN		Rec.	HUMAN	S100A7A
Nat.		PREGNANT MARE SERUM GONADOTROPIN (PMSG)		Rec.	HUMAN	S100A8
Rec.	CANINE	PROCALCITONIN		Rec.	HUMAN	S100A9
Rec.	HORSE	PROCALCITONIN		Rec.	HUMAN	S100A10
Rec.	HUMAN	PROCALCITONIN		Rec.	HUMAN	S100A11
Rec.	MOUSE	PROCALCITONIN		Rec.	HUMAN	S100A12
Rec.	PORCINE	PROCALCITONIN		Rec.	HUMAN	S100A13
Rec.	RAT	PROCALCITONIN		Rec.	HUMAN	S100A14
Rec.	RHESUS	PROCALCITONIN		Rec.	HUMAN	S100A16
Rec.	HUMAN	PROFILIN-1		Rec.	HUMAN	S100G
Rec.	HUMAN	PROGHRELIN		Rec.	HUMAN	S100P
Rec.	HUMAN	PROGUANYLIN		Rec.	HUMAN	SAP PROTEIN
Rec.	HUMAN	PROHIBITIN		Rec.	HUMAN	SARS-CoV NUCLEOCAPSID PROTEIN
Rec.	HUMAN	PROKINETICIN-2		Rec.	HUMAN	SCF
Rec.	MOUSE	PROLACTIN		Rec.	MOUSE	SCF
Rec.	RAT	PROLACTIN		Rec.	RAT	SCF
Nat.	HUMAN	PROLACTIN-INDUCIBLE PROTEIN		Rec.	HUMAN	SCGF- $\alpha$
Rec.	HUMAN	PROLINE-RICH ACIDIC PROTEIN 1		Rec.	HUMAN	SCGF- $\beta$
Rec.	HUMAN	PROPROTEIN CONVERTASE SUBTILISIN/KEXIN TYPE 9		Rec.	HUMAN	SCLEROSTIN
Rec.	HUMAN	PROSTAGLANDIN D SYNTHASE		Rec.	MOUSE	SDF-1 $\alpha$
Nat.	HUMAN	PROSTATE-SPECIFIC ANTIGEN		Rec.	RAT	SDF-1 $\alpha$
Rec.	HUMAN	PROTEIN DELTA HOMOLOG 1		Rec.	HUMAN	SDF-1 $\beta$
Rec.	HUMAN	PROTEIN DISULFIDE-ISOMERASE A3		Rec.	MOUSE	SDF-1 $\beta$
Rec.	HUMAN	PROUROGUANYLIN		Rec.	RAT	SDF-1 $\beta$
Rec.	HUMAN	PTHrP		Rec.	HUMAN	SDLL-1
Rec.	HUMAN	PULMONARY SURFACTANT-ASSOCIATED PROTEIN B		Rec.	HUMAN	SDLL-4
Rec.	HUMAN	PYRUVATE KINASE M2		Rec.	HUMAN	SECRETAGOGIN
<b>R</b>	Rec.	HUMAN		Rec.	RAT	SECRETAGOGIN
	Rec.	MOUSE	RANTES	Rec.	HUMAN	SECRETOGLOBIN FAMILY 1D MEMBER 1
	Rec.	RAT	RANTES	Rec.	HUMAN	SECRETOGLOBIN FAMILY 3A MEMBER 2
	Rec.	HUMAN	REGENERATING PROTEIN 1 ALPHA	Rec.	HUMAN	SERGLYCIN
	Rec.	HUMAN	REGENERATING PROTEIN 1 BETA	Rec.	HUMAN	SEX HORMONE-BINDING GLOBULIN CHO
	Rec.	HUMAN	REGENERATING PROTEIN 4	Rec.	MOUSE	SF-20
	Rec.	HUMAN	REGUCALCIN	Rec.	HUMAN	SLIT2-N
	Rec.	HUMAN	RELAXIN-2	Rec.	HUMAN	SLURP-1 (Dimeric)
	Rec.	HUMAN	RELAXIN-3	Rec.	HUMAN	SLURP-1 (Monomeric)
	Rec.	MOUSE	RELM $\beta$	Rec.	HUMAN	SONIC HEDGEHOG (SHH)
	Rec.	HUMAN	RENALASE	Rec.	MOUSE	SONIC HEDGEHOG (SHH)
	Rec.	HUMAN	RENIN	Rec.	HUMAN	SOX2
	Rec.	HUMAN	RENIN RECEPTOR	Rec.	HUMAN	SOX2-TAT
	Rec.	HUMAN	RESISTIN	Rec.	HUMAN	sOX40 LIGAND
	Rec.	MOUSE	RESISTIN	Rec.	HUMAN	SPARC/OSTEONECTIN
	Rec.	RAT	RESISTIN	Rec.	HUMAN	SPP-24
	Rec.	HUMAN	RESISTIN, Tag-free	Rec.	HUMAN	STANNIOCALCIN 1
	Rec.	HUMAN	RESISTIN-LIKE MOLECULE-BETA	Rec.	MOUSE	STANNIOCALCIN 1
	Rec.	MOUSE	RESISTIN-LIKE MOLECULE-GAMMA	Rec.	HUMAN	STANNIOCALCIN 2
	Rec.	HUMAN	RETINOL BINDING PROTEIN 4	Rec.	HUMAN	sRAGE
	Rec.	HUMAN	R-SPONDIN-1	Rec.	HUMAN	sRANK LIGAND
	Rec.	HUMAN	R-SPONDIN-2	Rec.	MOUSE	sRANK LIGAND
	Rec.	HUMAN	R-SPONDIN-3	Rec.	RAT	sRANK LIGAND
				Rec.	HUMAN	sRANK RECEPTOR
				Rec.	HUMAN	ST2



# PROTEINS

<b>T</b>	Rec.	HUMAN	TACI (TNFRSF13B)	Rec.	MOUSE	VEGF165	
	Rec.	HUMAN	TAFA-2	Rec.	RAT	VEGF165	
	Rec.	HUMAN	TARC	Rec.	HUMAN	VEGF-B	
	Rec.	HUMAN	TECK	Rec.	HUMAN	VEGF-C	
	Rec.	HUMAN	TESTIS FABP	Rec.	HUMAN	VEGF-D	
	Rec.	HUMAN	TGF-ALPHA	Rec.	HUMAN	VEGF-R1/FLT-1	
	Rec.	HUMAN	TGF-BETA 1	Rec.	HUMAN	VIMENTIN	
	Rec.	HUMAN	TGF-BETA 1	Rec.	HUMAN	VISFATIN	
	Rec.	HUMAN	TGF-BETA 2	Rec.	HUMAN	VISININ-LIKE PROTEIN 1	
	Rec.	HUMAN	TGF-BETA 3	Rec.	HUMAN	VITRONECTIN	
	Rec.	HUMAN	TGF- $\beta$ 2				
	Rec.	HUMAN	THROMBOMODULIN	<b>W</b>	Rec.	HUMAN	WAP FOUR-DISULFIDE CORE DOMAIN PROTEIN 2
	Rec.	HUMAN	THYMIC STROMAL LYMPHOPOIETIN		Rec.	HUMAN	WISP-3
	Rec.	HUMAN	THYMOSIN- $\beta$ 4		Rec.	HUMAN	WNT-1
	Rec.	HUMAN	THYROSTIMULIN ALPHA SUBUNIT	Rec.	HUMAN	WNT1-INDUCIBLE-SIGNALING PATHWAY PROTEIN 1	
	Rec.	HUMAN	THYROSTIMULIN BETA SUBUNIT	Rec.	HUMAN	WNT-3A	
	Rec.	HUMAN	TIGAR				
	Rec.	HUMAN	TIGAR-TAT				
	Rec.	HUMAN	TIMP-1	<b>X</b>	Rec.	HUMAN	XYLOSYLTRANSFERASE 2
	Rec.	HUMAN	TIMP-2				
	Rec.	HUMAN	TL-1A	<b>Z</b>	Rec.	HUMAN	ZINC-ALPHA-2-GLYCOPROTEIN
	Rec.	HUMAN	TLR-3		Rec.	HUMAN	ZYMOGEN GRANULE MEMBRANE PROTEIN 16
	Rec.	HUMAN	TNF- $\alpha$				
	Rec.	MOUSE	TNF- $\alpha$				
	Rec.	RAT	TNF- $\alpha$				
	Rec.	HUMAN	TNF- $\beta$				
	Rec.	HUMAN	sTNF RECEPTOR TYPE I				
	Rec.	HUMAN	sTNF RECEPTOR TYPE II				
	Rec.	HUMAN	TPO				
	Rec.	MOUSE	TPO				
	Rec.	RAT	TPO				
	Rec.	MOUSE	TRAIL				
	Rec.	HUMAN	sTRAIL RECEPTOR-1				
	Rec.	HUMAN	sTRAIL RECEPTOR-2				
	Rec.	HUMAN	sTRAIL/APO2L				
	Rec.	HUMAN	TREFOIL FACTOR 1				
	Rec.	HUMAN	TREFOIL FACTOR 2				
	Rec.	HUMAN	TREFOIL FACTOR 3				
	Rec.	RAT	TREFOIL FACTOR 3				
	Rec.	HUMAN	TSG				
	Rec.	HUMAN	TSLP				
	Rec.	HUMAN	TUBULIN POLYMERIZATION-PROMOTING PROTEIN				
	Rec.	HUMAN	TUMOR NECROSIS FACTOR LIGAND SUPERFAMILY MEMBER 12				
	Rec.	HUMAN	TWEAK				
	Rec.	HUMAN	TWEAK RECEPTOR				
<b>U</b>	Rec.	HUMAN	UBIQUITIN CARBOXYL-TERMINAL HYDROLASE ISOZYME L1				
	Rec.	HUMAN	ULBP5				
	Nat.	CANINE	UROMODULIN				
	Nat.	FELINE	UROMODULIN				
	Nat.	HUMAN	UROMODULIN				
	Nat.	PORCINE	UROMODULIN				
<b>V</b>	Rec.	HUMAN	VANIN-1				
	Rec.	HUMAN	VAP-1				
	Rec.	HUMAN	VASPIN				
	Rec.	HUMAN	VEGF121				
	Rec.	HUMAN	VEGF165				

# IMMUNOHISTOCHEMISTRY

## IMMUNOHISTOCHEMISTRY

### RETRIEVER PRODUCTS

RETRIEVER UNIT	RETRIEVER UNIT
ACCESSORIES	BASKET
ACCESSORIES	BASKET LID FOR CHAMBERS
ACCESSORIES	CHAMBER RACK
ACCESSORIES	CORD SET EU
ACCESSORIES	CORD SET UK
ACCESSORIES	CORD SET UL (US MAINLY)
ACCESSORIES	GREEN SILICONE SEALING GASKET
ACCESSORIES	LIFTING DEVICE
ACCESSORIES	SLIDE CHAMBER
RETRIEVER TISSUE SLIDES	RETRIEVER TISSUE SLIDES (20x BOX 72)
RETRIEVER TISSUE SLIDES	RETRIEVER TISSUE SLIDES (30x BOX X 72)
RETRIEVER TISSUE SLIDES	RETRIEVER TISSUE SLIDES (BOX 72)

### BUFFER

UNIVERSAL	UNIVERSAL BUFFERS
IHC	ANTIBODY DILUENT FOR FROZEN SECTIONS READY-TO-USE
IHC	ANTIBODY DILUENT READY-TO-USE
IHC	PEROXIDASE CONJUGATE DILUENT READY-TO-USE
IHC	SECTION BLOCK READY-TO-USE
IHC	SLIDES WASHING BUFFER 10x STOCK
WESTERN BLOT	ANTIBODY DILUENT W READY-TO-USE
WESTERN BLOT	PEROXIDASE CONJUGATE DILUENT READY-TO-USE
WESTERN BLOT	PEROXIDASE CONJUGATE DILUENT READY-TO-USE
WESTERN BLOT	STRIPPING BUFFER READY-TO-USE
WESTERN BLOT	WASHING BUFFER W TRIS-BASED 10x WESTERN BLOCK, BSA-FREE READY-TO-USE
ELISA	COATING BUFFER 7.4
ELISA	COATING BUFFER 9.6
ELISA	PEROXIDASE CONJUGATE DILUENT READY-TO-USE
ELISA	PLATE BLOCK
ELISA	PLATE BLOCK, NO COMPONENTS OF ANIMAL ORIGIN
ELISA	SAMPLE & ANTIBODY DILUENT E READY-TO-USE
ELISA	WASHING BUFFER E PBS-BASED 10x

### TISSUE MICROARRAY

MOLD KIT	1 mm (10 x 17; 170 wells)
MOLD KIT	1.5 mm (10 x 15; 150 wells)
MOLD KIT	2 mm (7 x 10; 70 wells)
MOLD KIT	3 mm (5 x 8; 40 wells)
MOLD KIT	5 mm (3 x 5; 15 wells)
MOLD KIT	BASE MOLD
MOLD KIT	EMBEDDING CASSETTE
PREMADE RECIPIENT BLOCK	1 mm (10 x 12; 120 wells)
PREMADE RECIPIENT BLOCK	1.5 mm (9 x 10; 90 wells)
PREMADE RECIPIENT BLOCK	2 mm (6 x 10; 60 wells)
PREMADE RECIPIENT BLOCK	3 mm (5 x 6; 30 wells)
PREMADE RECIPIENT BLOCK	5 mm (4 x 5; 20 wells)
PUNCHER TIP	1 mm
PUNCHER TIP	1.5 mm
PUNCHER TIP	2 mm
PUNCHER TIP	3 mm
PUNCHER TIP	5 mm
PUNCHER TIP	GUIDE FOR 1 mm RECIPIENT BLOCK
TISSUE MICROARRAYER SET	FULL SET WITH 5 TIPS AND 5 SIZED BLOCKS
TISSUE MICROARRAYER SET	SINGLE SET FOR 1 mm PUNCHER WITH A GUIDE
TISSUE MICROARRAYER SET	SINGLE SET FOR 1.5 mm PUNCHER
TISSUE MICROARRAYER SET	SINGLE SET FOR 2 mm PUNCHER
TISSUE MICROARRAYER SET	SINGLE SET FOR 3 mm PUNCHER
TISSUE MICROARRAYER SET	SINGLE SET FOR 5 mm PUNCHER

# ENDOTOXIN DETECTION & REMOVAL PRODUCTS

## ENDOTOXIN DETECTION & REMOVAL PRODUCTS

- E** ENDOGRADE® GLASS TEST TUBES  
ENDOLISA® ENDOTOXIN DETECTION ASSAY BASED ON ELISA-TECHNOLOGY  
ENDOGRADE® WATER, 100 ML, 16 BOTTLES PER PACK

- ENDO-RS® (ENDOTOXIN RECOVERY KIT)
- ENDOZYME® II RECOMBINANT FACTOR C ENDOTOXIN DETECTION

# CELL-BASED ASSAYS

## CELL-BASED ASSAYS

- A** APOPercentage ASSAY
- C** CELL-CLOCK (Large Economy Kit)  
CELL-CLOCK (Standard Kit Size)

# EXTRACELLULAR MATRIX ASSAYS

## EXTRACELLULAR MATRIX ASSAYS

- B** BLYSCAN™ DISSOCIATION REAGENT  
BLYSCAN™ DYE & DISSOCIATION REAGENTS  
BLYSCAN™ DYE REAGENT  
BLYSCAN™ SGAG ASSAY (Large economy size)  
BLYSCAN™ SGAG ASSAY (Standard kit size)  
BLYSCAN™ SGAG ISOLATION & CONCENTRATION PACK  
BLYSCAN™ SGAG REFERENCE STANDARD (100 µg/ml)

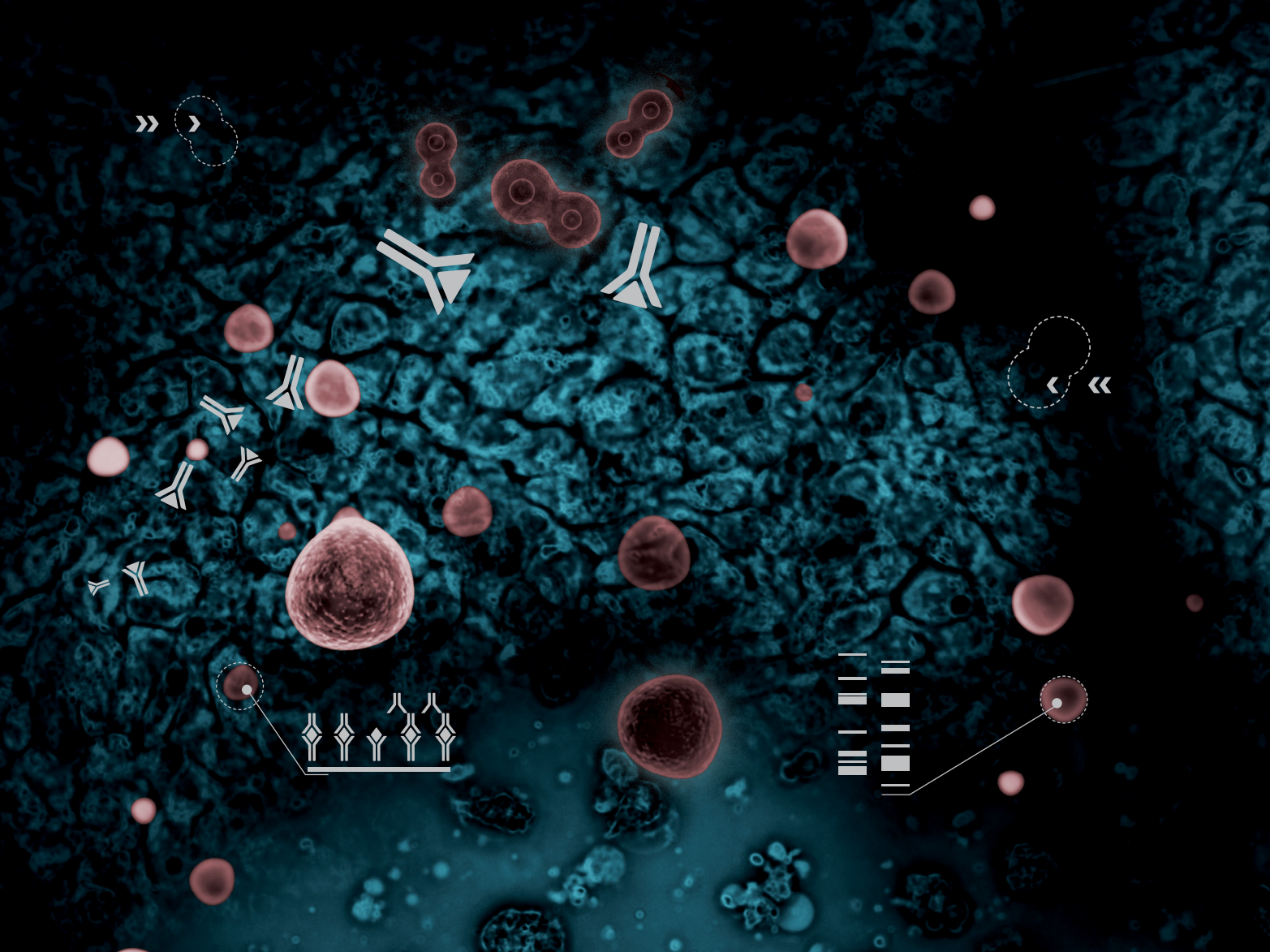
- F** FASTIN™ DYE REAGENT  
FASTIN™ ELASTIN ASSAY (Large economy size)  
FASTIN™ ELASTIN ASSAY (Standard kit size)  
FASTIN™ ELASTIN REFERENCE STANDARD (1 mg/ml)

- K** KERATIN ORANGE (Standard kit)  
KERATIN ORANGE (Economy kit)

- P** PURPLE-JELLEY HYALURONAN ASSAY (Economy kit)  
PURPLE-JELLEY HYALURONAN ASSAY (Standard kit)

- S** S2000 DENATURED COLLAGEN STANDARD (1 mg/ml)  
S2000 FRAGMENTATION REAGENT  
SIRCOL™ ACID-SALT WASH  
SIRCOL™ BOVINE COLLAGEN REFERENCE STANDARD (0.5 mg/ml)  
SIRCOL™ DYE & DYE RELEASE REAGENTS  
SIRCOL™ DYE REAGENT

- SIRCOL™ DYE RELEASE REAGENT
- SIRCOL™ INSOLUBLE COLLAGEN ASSAY (Large economy kit)
- SIRCOL™ INSOLUBLE COLLAGEN ASSAY, BOVINE COLLAGEN (Standard kit size)
- SIRCOL™ ISOLATION & CONCENTRATION REAGENT
- SIRCOL™ RAT COLLAGEN REFERENCE STANDARD (0.5 mg/ml)
- SIRCOL™ SOLUBLE COLLAGEN ASSAY (Large economy kit)
- SIRCOL™ SOLUBLE COLLAGEN ASSAY, BOVINE COLLAGEN (Standard kit size)
- SIRCOL™ SOLUBLE COLLAGEN ASSAY, RAT COLLAGEN (Standard kit size)
- SIRCOL™ SOLUBLE PLUS SIRCOL™ INSOLUBLE COLLAGEN COMBINATION PACK



**BioVendor – Laboratorni medicina a.s.**

Research & Diagnostic Products Division  
 Karasek 1767/1, 621 00 Brno, CZECH REPUBLIC  
 Phone: +420 549 124 185, Fax: +420 549 211 460  
 E-mail: info@biovendor.com

**Germany and Switzerland:**

**BioVendor GmbH**

Otto-Hahn-Straße 16, 34123 Kassel, GERMANY  
 Phone: +49 (0)561 861 509 33, Fax: +49 (0)561 861 509 34  
 E-mail: infoEU@biovendor.com

**Austria:**

**BioVendor GesmbH**

Gaudenzdorfer Gürtel 43-45, 1120, Vienna, AUSTRIA  
 Phone: +43 1 890 9025, Fax: +43 1 890 5163  
 E-mail: infoAustria@biovendor.com

**USA, Canada and Mexico:**

**BioVendor, LLC**

128 Bingham Rd., Suite 1300 Asheville, NC 28806, USA  
 Phone: +1-800-404-7807, +1-828-575-9250, Fax: +1-828-575-9251  
 E-mail: infoUSA@biovendor.com

**United Kingdom and Ireland:**

**Oxford Biosystems Ltd**

184B Park House, Park Drive  
 Milton Park, Abingdon, Oxfordshire  
 OX14 4SR, UNITED KINGDOM  
 Phone: +44 (0)1235 431390  
 E-mail: sales@oxfordbiosystems.com

➤ [www.biovendor.com](http://www.biovendor.com)

➤ [www.oxfordbiosystems.com](http://www.oxfordbiosystems.com)

